

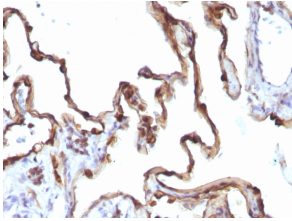
Anti-Cytokeratin 7 Antibody [KRT7/1198] - BSA and Azide free (A252322)

Specifications:

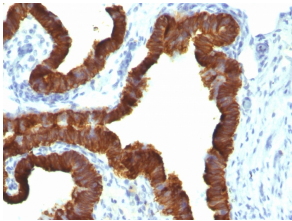
| | |
|------------------------|--|
| Name: | Anti-Cytokeratin 7 Antibody [KRT7/1198] - BSA and Azide free |
| Description: | Mouse monoclonal [KRT7/1198] antibody to Cytokeratin 7. |
| Specificity: | This antibody is highly specific to Cytokeratin 7 and shows no cross-reaction with other intermediate filament proteins. |
| Applications: | Flow Cytometry, IF, IHC-P |
| Recommended Dilutions: | Flow Cytometry: 1-2 µg/million cells, IF: 1-2 µg/ml, IHC-P: 1-2 µg/ml |
| Reactivity: | Human, Rat |
| Immunogen: | Recombinant full-length human KRT7 protein. |
| Host: | Mouse |
| Clonality: | Monoclonal |
| Clone ID: | KRT7/1198 |
| Isotype: | IgG1 |
| Light Chains: | kappa |
| Conjugate: | Unconjugated |
| Purification: | Protein A/G chromatography. |
| Concentration: | 1 mg/ml |
| Product Form: | Liquid |
| Formulation: | Supplied in 10mM Phosphate Buffered Saline; without Sodium Azide and carrier free. |
| Storage: | Shipped at 4°C. Upon delivery aliquot and store at -20°C. Avoid freeze / thaw cycles. |
| General Notes: | This monoclonal antibody is also available in a different formulation with BSA and Sodium Azide - Anti-Cytokeratin 7 Antibody [KRT7/1198] (A249142). |
| Disclaimer: | This product is for research use only. It is not intended for diagnostic or therapeutic use. |

Anti-Cytokeratin 7 Antibody [KRT7/1198] - BSA and Azide free (A252322)

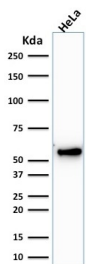
Images:



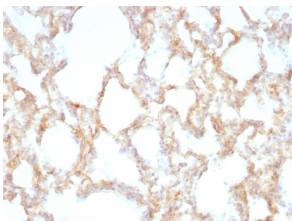
Immunohistochemical analysis of formalin-fixed, paraffin-embedded human lung carcinoma using Anti-Cytokeratin 7 Antibody [KRT7/1198].



Immunohistochemical analysis of formalin-fixed, paraffin-embedded human ovarian carcinoma using Anti-Cytokeratin 7 Antibody [KRT7/1198].



Western blot analysis of human HeLa cell lysate using Anti-Cytokeratin 7 Antibody [KRT7/1198].



Immunohistochemical analysis of formalin-fixed, paraffin-embedded rat lung using Anti-Cytokeratin 7 Antibody [KRT7/1198].