

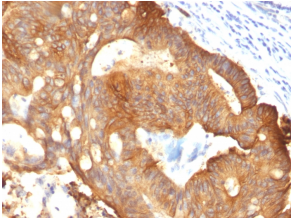
Anti-Cytokeratin 8 Antibody [B22.1] - BSA and Azide free (A252324)

Specifications:

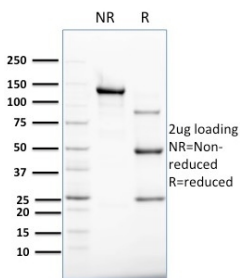
Name:	Anti-Cytokeratin 8 Antibody [B22.1] - BSA and Azide free
Description:	Mouse monoclonal [B22.1] antibody to Cytokeratin 8.
Applications:	Flow Cytometry, WB, IF, IHC-P
Recommended Dilutions:	Flow Cytometry: 1-2 µg/million cells, WB: 1-2 µg/ml, IF: 1-2 µg/ml, IHC-P: 1-2 µg/ml
Reactivity:	Human, Sheep, Rabbit, Bovine, Porcine
Cross Reactivity:	This antibody does not cross react with Mouse, Rat, Chicken, or Xenopus laevis.
Immunogen:	Cytoskeletal preparation from HeLa cells.
Host:	Mouse
Clonality:	Monoclonal
Clone ID:	B22.1
Isotype:	IgG1
Light Chains:	kappa
Conjugate:	Unconjugated
Purification:	Protein A/G chromatography.
Concentration:	1 mg/ml
Product Form:	Liquid
Formulation:	Supplied in 10mM Phosphate Buffered Saline; without Sodium Azide and carrier free.
Storage:	Shipped at 4°C. Upon delivery aliquot and store at -20°C. Avoid freeze / thaw cycles.
General Notes:	This monoclonal antibody is also available in a different formulation with BSA and Sodium Azide - Anti-Cytokeratin 8 Antibody [B22.1] (A249144).
Disclaimer:	This product is for research use only. It is not intended for diagnostic or therapeutic use.

Anti-Cytokeratin 8 Antibody [B22.1] - BSA and Azide free (A252324)

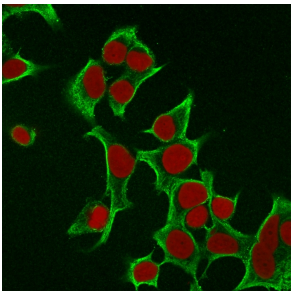
Images:



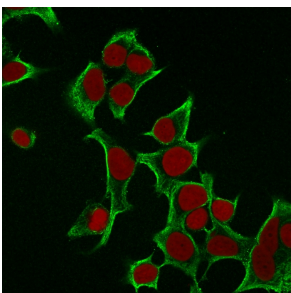
Immunohistochemical analysis of formalin-fixed, paraffin-embedded colon carcinoma using Anti-Cytokeratin 8 Antibody [B22.1].



SDS-PAGE analysis of Anti-Cytokeratin 8 Antibody [B22.1] under non-reduced and reduced conditions; showing intact IgG and intact heavy and light chains, respectively. SDS-PAGE analysis confirms the integrity and purity of the antibody.



Immunofluorescent analysis of MCF-7 cells stained with Anti-Cytokeratin 8 Antibody [B22.1] followed by Goat Anti-Mouse IgG (CF® 488) (Green). The nuclear counterstain is RedDot (Red).



Immunofluorescent analysis of MCF-7 cells stained with Anti-Cytokeratin 8 Antibody [B22.1] followed by Goat Anti-Mouse IgG (CF® 488) (Green). The nuclear counterstain is RedDot (Red).