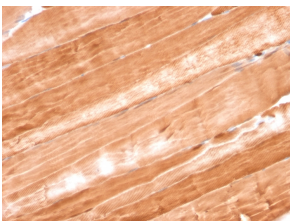


## Anti-Myoglobin Antibody [MB/2105] - BSA and Azide free (A252458)

### Specifications:

Name:	Anti-Myoglobin Antibody [MB/2105] - BSA and Azide free
Description:	Mouse monoclonal [MB/2105] antibody to Myoglobin.
Applications:	IHC-P
Recommended Dilutions:	IHC-P: 1-2 µg/ml
Reactivity:	Human, Mouse, Rat
Immunogen:	Recombinant full-length human Myoglobin protein.
Host:	Mouse
Clonality:	Monoclonal
Clone ID:	MB/2105
Isotype:	IgG2b
Light Chains:	kappa
Conjugate:	Unconjugated
Purification:	Protein A/G chromatography.
Concentration:	1 mg/ml
Product Form:	Liquid
Formulation:	Supplied in 10mM Phosphate Buffered Saline; without Sodium Azide and carrier free.
Storage:	Shipped at 4°C. Upon delivery aliquot and store at -20°C. Avoid freeze / thaw cycles.
General Notes:	This monoclonal antibody is also available in a different formulation with BSA and Sodium Azide - Anti-Myoglobin Antibody [MB/2105] (A249278).
Disclaimer:	This product is for research use only. It is not intended for diagnostic or therapeutic use.

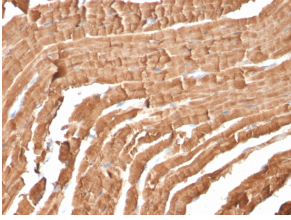
### Images:



Immunohistochemical analysis of formalin-fixed, paraffin-embedded rat skeletal muscle using Anti-Myoglobin Antibody [MB/2105].

## Anti-Myoglobin Antibody [MB/2105] - BSA and Azide free (A252458)

Images continued:



Immunohistochemical analysis of formalin-fixed, paraffin-embedded mouse heart using Anti-Myoglobin Antibody [MB/2105].