

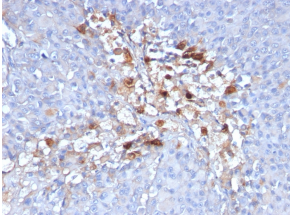
Anti-CD146 Antibody [C146/634] - BSA and Azide free (A252472)

Specifications:

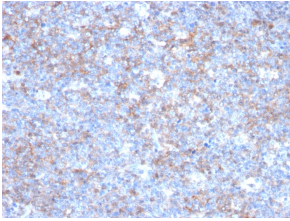
Name:	Anti-CD146 Antibody [C146/634] - BSA and Azide free
Description:	Mouse monoclonal [C146/634] antibody to CD146.
Specificity:	The human CD146 gene maps to chromosome 11q23 and encodes a trans-membrane glycoprotein, also designated MCAM, MUC 18, that belongs to the immunoglobulin superfamily and functions as a Ca ²⁺ -independent cell adhesion molecule. CD146 expression is restricted to advanced primary and metastatic melanomas and to cell lines of the neuroectodermal lineage, but not normal melanocytes. CD146 is found on 80% of advanced primary human melanomas and correlates well with development of metastatic disease.
Applications:	Flow Cytometry, IF, IHC-P
Recommended Dilutions:	Flow Cytometry: 1-2 µg/million cells, IF: 1-2 µg/ml, IHC-P: 1-2 µg/ml
Reactivity:	Human
Immunogen:	Recombinant human CD146 protein.
Host:	Mouse
Clonality:	Monoclonal
Clone ID:	C146/634
Isotype:	IgG1
Light Chains:	kappa
Conjugate:	Unconjugated
Purification:	Protein A/G chromatography.
Concentration:	1 mg/ml
Product Form:	Liquid
Formulation:	Supplied in 10mM Phosphate Buffered Saline; without Sodium Azide and carrier free.
Storage:	Shipped at 4°C. Upon delivery aliquot and store at -20°C. Avoid freeze / thaw cycles.
General Notes:	This monoclonal antibody is also available in a different formulation with BSA and Sodium Azide - Anti-CD146 Antibody [C146/634] (A249292).
Disclaimer:	This product is for research use only. It is not intended for diagnostic or therapeutic use.

Anti-CD146 Antibody [C146/634] - BSA and Azide free (A252472)

Images:



Immunohistochemical analysis of formalin-fixed, paraffin-embedded human melanoma using Anti-CD146 Antibody [C146/634].



Immunohistochemical analysis of formalin-fixed, paraffin-embedded human tonsil using Anti-CD146 Antibody [C146/634].