

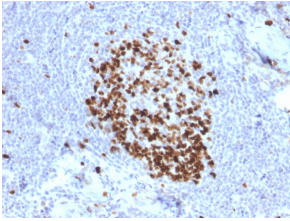
Anti-Ki67 Antibody [MKI67/2466] - BSA and Azide free (A252528)

Specifications:

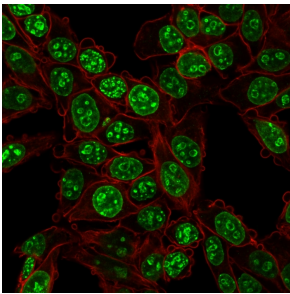
Name:	Anti-Ki67 Antibody [MKI67/2466] - BSA and Azide free
Description:	Mouse monoclonal [MKI67/2466] antibody to Ki67.
Applications:	Flow Cytometry, IHC-P
Recommended Dilutions:	Flow Cytometry: 1-2 µg/million cells, IF: 1-2 µg/ml, IHC-P: 1-2 µg/ml
Reactivity:	Human
Immunogen:	Recombinant fragment, around amino acids 2293-2478, of human Ki67 protein. The exact sequence is proprietary.
Host:	Mouse
Clonality:	Monoclonal
Clone ID:	MKI67/2466
Isotype:	IgG2b
Light Chains:	kappa
Conjugate:	Unconjugated
Purification:	Protein A/G chromatography.
Concentration:	1 mg/ml
Product Form:	Liquid
Formulation:	Supplied in 10mM Phosphate Buffered Saline; without Sodium Azide and carrier free.
Storage:	Shipped at 4°C. Upon delivery aliquot and store at -20°C. Avoid freeze / thaw cycles.
General Notes:	This monoclonal antibody is also available in a different formulation with BSA and Sodium Azide - Anti-Ki67 Antibody [MKI67/2466] (A249348).
Disclaimer:	This product is for research use only. It is not intended for diagnostic or therapeutic use.

Anti-Ki67 Antibody [MKI67/2466] - BSA and Azide free (A252528)

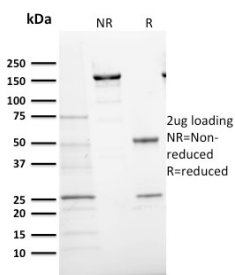
Images:



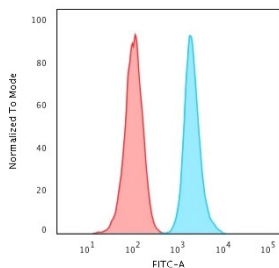
Immunohistochemical analysis of formalin-fixed, paraffin-embedded human tonsil using Anti-Ki67 Antibody [MKI67/2466].



Immunofluorescent analysis of HeLa cells stained with Anti-Ki67 Antibody [MKI67/2466] (CF@ 488) (Green). Phalloidin (Purple) is used to label the membranes.



SDS-PAGE analysis of Anti-Ki67 Antibody [MKI67/2466] under non-reduced and reduced conditions; showing intact IgG and intact heavy and light chains, respectively. SDS-PAGE analysis confirms the integrity and purity of the antibody.



Flow cytometric analysis of HeLa cells using Anti-Ki67 Antibody [MKI67/2466] followed by Goat Anti-Mouse IgG (CF@ 488) (Blue). Isotype Control (Red).