

Anti-MUC1 Antibody [MUC1/955] - BSA and Azide free (A252576)

Specifications:

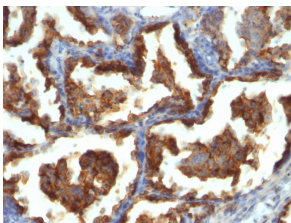
Name:	Anti-MUC1 Antibody [MUC1/955] - BSA and Azide free
Description:	Mouse monoclonal [MUC1/955] antibody to MUC1.
Specificity:	This antibody reacts with MUC1. The dominant epitope of This antibody has not yet been determined. MUC1 is a large cell surface mucin glycoprotein expressed by most glandular and ductal epithelial cells and some hematopoietic cell lineages. It is expressed on most secretory epithelium, including mammary gland and some hematopoietic cells. It is expressed abundantly in lactating mammary glands and over expressed abundantly in 90% breast carcinomas and metastases. Transgenic MUC1 has been shown to associate with all four c-erbB receptors and localize with c-erbB1 (EGFR) in lactating glands. The MUC1 gene contains seven exons and produces several different alternatively spliced variants. The major expressed form of MUC1 uses all seven exons and is a type 1 transmembrane protein with a large extracellular tandem repeat domain. The tandem repeat domain is highly O glycosylated and alterations in glycosylation have been shown in epithelial cancer cells. Antibody to EMA is useful as a pan-epithelial marker for detecting early metastatic loci of carcinoma in bone marrow or liver.
Applications:	ELISA, WB, Flow Cytometry, IF, IHC
Recommended Dilutions:	ELISA: 2-4 µg/ml, WB: 1-2 µg/ml, Flow Cytometry: 0.5-1 µg/million cells, IF: 1-2 µg/ml, IHC: 0.25-0.5 µg/ml
Reactivity:	Human, Mouse
Immunogen:	Human milk fat globule membranes.
Host:	Mouse
Clonality:	Monoclonal
Clone ID:	MUC1/955
Isotype:	IgG1
Light Chains:	kappa
Conjugate:	Unconjugated
Purification:	Protein A/G chromatography.
Concentration:	1 mg/ml
Product Form:	Liquid
Formulation:	Supplied in 10mM Phosphate Buffered Saline; without Sodium Azide and carrier free.

Anti-MUC1 Antibody [MUC1/955] - BSA and Azide free (A252576)

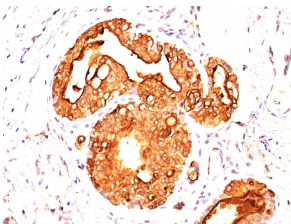
Specifications continued:

Storage:	Shipped at 4°C. Upon delivery aliquot and store at -20°C. Avoid freeze / thaw cycles.
General Notes:	This monoclonal antibody is also available in a different formulation with BSA and Sodium Azide - Anti-MUC1 Antibody [MUC1/955] (A249396).
Disclaimer:	This product is for research use only. It is not intended for diagnostic or therapeutic use.

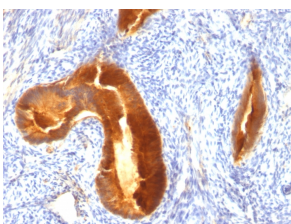
Images:



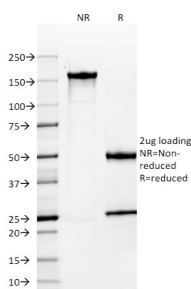
Immunohistochemical analysis of formalin-fixed, paraffin-embedded human ovarian carcinoma using Anti-MUC1 Antibody [MUC1/955].



Immunohistochemical analysis of formalin-fixed, paraffin-embedded human breast carcinoma using Anti-MUC1 Antibody [MUC1/955].



Immunohistochemical analysis of formalin-fixed, paraffin-embedded human endometrial carcinoma using Anti-MUC1 Antibody [MUC1/955].



SDS-PAGE analysis of Anti-MUC1 Antibody [MUC1/955] under non-reduced and reduced conditions; showing intact IgG and intact heavy and light chains, respectively. SDS-PAGE analysis confirms the integrity and purity of the antibody.