

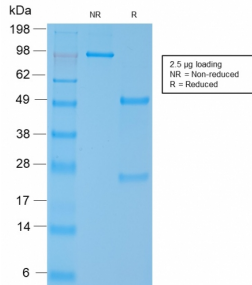
## Anti-MYH11 Antibody [MYH11/2303R] - BSA and Azide free (A252644)

### Specifications:

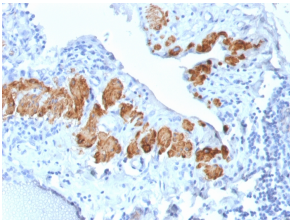
Name:	Anti-MYH11 Antibody [MYH11/2303R] - BSA and Azide free
Description:	Recombinant rabbit monoclonal [MYH11/2303R] antibody to MYH11.
Specificity:	Smooth muscle myosin heavy chain (SM-MHC) is a cytoplasmic structural protein, which is a major component of the contractile apparatus in smooth muscle cells. Expression of smooth muscle myosin is developmentally regulated, appearing early in smooth muscle development, and is specific for smooth muscle development. Two isoforms of smooth muscle myosin heavy chain have been identified, designated MHC-1 and MHC-2. The antibody may be useful for the study of breast tumors as the presence of an intact layer of myoepithelial cells is an important feature, which may distinguish benign breast lesions and carcinoma in situ from invasive tumors.
Applications:	IHC-P
Recommended Dilutions:	IHC-P: 1-2 µg/ml
Reactivity:	Human, Bovine, Porcine, Canine, Feline, Rabbit, Rat, Guinea Pig, Chicken
Immunogen:	Recombinant full-length human MYH11 protein.
Host:	Rabbit
Clonality:	Monoclonal
Clone ID:	MYH11/2303R
Isotype:	IgG
Conjugate:	Unconjugated
Purification:	Protein A/G chromatography.
Concentration:	1 mg/ml
Product Form:	Liquid
Formulation:	Supplied in 10mM Phosphate Buffered Saline; without Sodium Azide and carrier free.
Storage:	Shipped at 4°C. Upon delivery aliquot and store at -20°C. Avoid freeze / thaw cycles.
General Notes:	This monoclonal antibody is also available in a different formulation with BSA and Sodium Azide - Anti-MYH11 Antibody [MYH11/2303R] (A249464).
Disclaimer:	This product is for research use only. It is not intended for diagnostic or therapeutic use.

## Anti-MYH11 Antibody [MYH11/2303R] - BSA and Azide free (A252644)

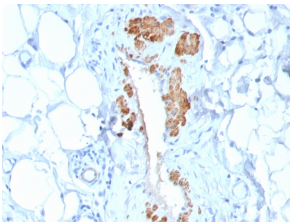
### Images:



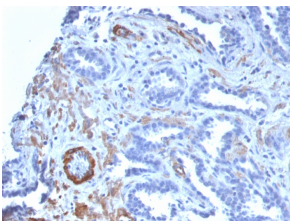
SDS-PAGE analysis of Anti-MYH11 Antibody [MYH11/2303R] under non-reduced and reduced conditions; showing intact IgG and intact heavy and light chains, respectively. SDS-PAGE analysis confirms the integrity and purity of the antibody.



Immunohistochemical analysis of formalin-fixed, paraffin-embedded human breast carcinoma using Anti-MYH11 Antibody [MYH11/2303R].



Immunohistochemical analysis of formalin-fixed, paraffin-embedded human breast carcinoma using Anti-MYH11 Antibody [MYH11/2303R].



Immunohistochemical analysis of formalin-fixed, paraffin-embedded human prostate carcinoma using Anti-MYH11 Antibody [MYH11/2303R].