

## Anti-NRF1 Antibody [NRF1/2609] - BSA and Azide free (A252713)

### Specifications:

Name:	Anti-NRF1 Antibody [NRF1/2609] - BSA and Azide free
Description:	Mouse monoclonal [NRF1/2609] antibody to NRF1.
Specificity:	The NF-E2 DNA binding protein is composed of two subunits, p45 and MafK, and it regulates expression of globin genes in developing erythroid cells through interaction with Maf recognition elements (MAREs). A family of NF-E2 related proteins, which are collectively known as the Cap 'n' collar (CNC) family and include Nrf1 (also designated TCF11), Nrf2 and Nrf3, are bZIP transcription factors that heterodimerize with Maf proteins to bind MARE sequences. The Nrf proteins also bind the antioxidant response element (ARE) and are implicated in the regulation of detoxification enzymes and the oxidative stress response. They do so by heterodimerizing with Jun family members (c-Jun, JunB and JunD) to activate gene expression, specifically the detoxifying enzyme, NQO1. Nrf2 is widely expressed and is thought to translocate to the nucleus after treatment with xenobiotics and antioxidants, which stimulate its release from a repressor protein Keap1. Nrf3 is highly expressed in placenta, B cells and monocytes.
Applications:	WB, IHC-P
Recommended Dilutions:	WB: 1-2 µg/ml, IHC-P: 1-2 µg/ml
Reactivity:	Human
Immunogen:	Recombinant full-length human NRF1 protein.
Host:	Mouse
Clonality:	Monoclonal
Clone ID:	NRF1/2609
Isotype:	IgG1
Light Chains:	kappa
Conjugate:	Unconjugated
Purification:	Protein A/G chromatography.
Concentration:	1 mg/ml
Product Form:	Liquid
Formulation:	Supplied in 10mM Phosphate Buffered Saline; without Sodium Azide and carrier free.
Storage:	Shipped at 4°C. Upon delivery aliquot and store at -20°C. Avoid freeze / thaw cycles.

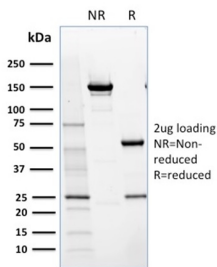
## Anti-NRF1 Antibody [NRF1/2609] - BSA and Azide free (A252713)

### Specifications continued:

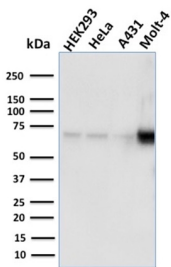
**General Notes:** This monoclonal antibody is also available in a different formulation with BSA and Sodium Azide - Anti-NRF1 Antibody [NRF1/2609] (A249533).

**Disclaimer:** This product is for research use only. It is not intended for diagnostic or therapeutic use.

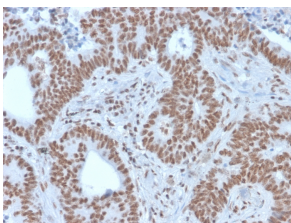
### Images:



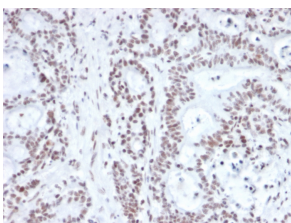
SDS-PAGE analysis of Anti-NRF1 Antibody [NRF1/2609] under non-reduced and reduced conditions; showing intact IgG and intact heavy and light chains, respectively. SDS-PAGE analysis confirms the integrity and purity of the antibody.



Western blot analysis of human HEK293, HeLa, A431, and MOLT4 cell lysates using Anti-NRF1 Antibody [NRF1/2609].



Immunohistochemical analysis of formalin-fixed, paraffin-embedded human colon carcinoma using Anti-NRF1 Antibody [NRF1/2609].



Immunohistochemical analysis of formalin-fixed, paraffin-embedded human prostate carcinoma using Anti-NRF1 Antibody [NRF1/2609].