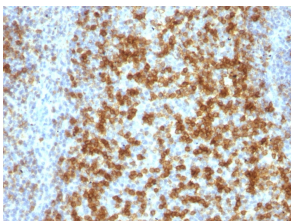


Anti-PD1 Antibody [PDCD1/922] - BSA and Azide free (A252765)

Specifications:

Name:	Anti-PD1 Antibody [PDCD1/922] - BSA and Azide free
Description:	Mouse monoclonal [PDCD1/922] antibody to PD1.
Applications:	Flow Cytometry, IF, IHC-P
Recommended Dilutions:	Flow Cytometry: 1-2 µg/million cells, IF: 1-2 µg/ml, IHC-P: 1-2 µg/ml
Reactivity:	Human
Immunogen:	Recombinant full-length human PDCD1 protein.
Host:	Mouse
Clonality:	Monoclonal
Clone ID:	PDCD1/922
Isotype:	IgG1
Light Chains:	kappa
Conjugate:	Unconjugated
Purification:	Protein A/G chromatography.
Concentration:	1 mg/ml
Product Form:	Liquid
Formulation:	Supplied in 10mM Phosphate Buffered Saline; without Sodium Azide and carrier free.
Storage:	Shipped at 4°C. Upon delivery aliquot and store at -20°C. Avoid freeze / thaw cycles.
General Notes:	This monoclonal antibody is also available in a different formulation with BSA and Sodium Azide - Anti-PD1 Antibody [PDCD1/922] (A249585).
Disclaimer:	This product is for research use only. It is not intended for diagnostic or therapeutic use.

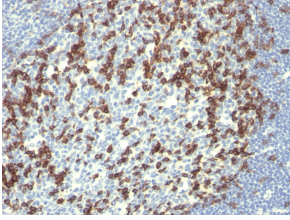
Images:



Immunohistochemical analysis of formalin-fixed, paraffin-embedded human tonsil using Anti-PD1 Antibody [PDCD1/922].

Anti-PD1 Antibody [PDCD1/922] - BSA and Azide free (A252765)

Images continued:



Immunohistochemical analysis of formalin-fixed, paraffin-embedded human tonsil using Anti-PD1 Antibody [PDCD1/922].