

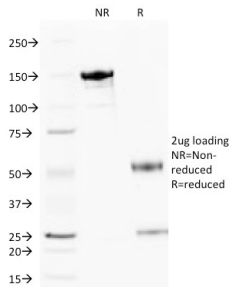
Anti-Cytochrome C Antibody [6H2.B4] - BSA and Azide free (A252822)

Specifications:

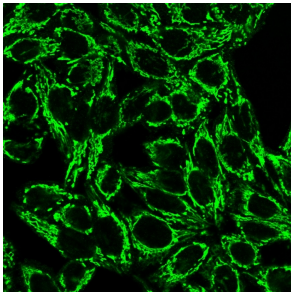
Name:	Anti-Cytochrome C Antibody [6H2.B4] - BSA and Azide free
Description:	Mouse monoclonal [6H2.B4] antibody to Cytochrome C.
Applications:	Flow Cytometry, IF
Recommended Dilutions:	Flow Cytometry: 1-2 µg/million cells, IF: 1-2 µg/ml
Reactivity:	Human, Mouse, Rat
Immunogen:	full-length rat Cytochrome c protein.
Host:	Mouse
Clonality:	Monoclonal
Clone ID:	6H2.B4
Isotype:	IgG1
Light Chains:	kappa
Conjugate:	Unconjugated
Purification:	Protein A/G chromatography.
Concentration:	1 mg/ml
Product Form:	Liquid
Formulation:	Supplied in 10mM Phosphate Buffered Saline; without Sodium Azide and carrier free.
Storage:	Shipped at 4°C. Upon delivery aliquot and store at -20°C. Avoid freeze / thaw cycles.
General Notes:	This monoclonal antibody is also available in a different formulation with BSA and Sodium Azide - Anti-Cytochrome C Antibody [6H2.B4] (A249642).
Disclaimer:	This product is for research use only. It is not intended for diagnostic or therapeutic use.

Anti-Cytochrome C Antibody [6H2.B4] - BSA and Azide free (A252822)

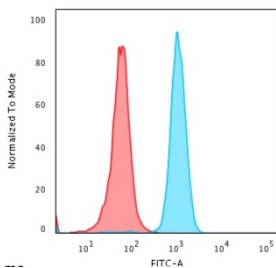
Images:



SDS-PAGE analysis of Anti-Cytochrome C Antibody [6H2.B4] under non-reduced and reduced conditions; showing intact IgG and intact heavy and light chains, respectively. SDS-PAGE analysis confirms the integrity and purity of the antibody.



Immunofluorescent analysis of PFA fixed HeLa cells stained with Anti-Cytochrome C Antibody [6H2.B4] followed by Goat Anti-Mouse IgG (CF@ 488) (Green).



Flow cytometric analysis of PFA fixed HeLa cells using Anti-Cytochrome C Antibody [6H2.B4] followed by Goat Anti-Mouse IgG (CF@ 488) (Blue). Isotype Control (Red).