

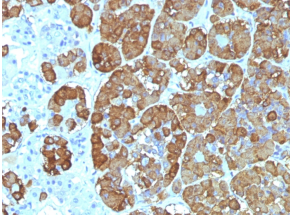
## Anti-ACTH Antibody [CLIP/1449] - BSA and Azide free (A252846)

### Specifications:

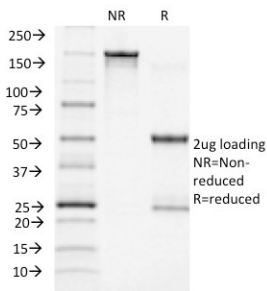
|                        |   |
|------------------------|---|
| Name:                  | Anti-ACTH Antibody [CLIP/1449] - BSA and Azide free   |
| Description:           | Mouse monoclonal [CLIP/1449] antibody to ACTH.  |
| Specificity:           | This antibody is specific to CLIP, amino acids 25-39 of ACTH, and it does not react with Synacthen, amino acids 1-24 of ACTH.               |
| Applications:          | ELISA, IHC-P  |
| Recommended Dilutions: | IHC-P: 1-2 µg/ml  |
| Reactivity:            | Human   |
| Immunogen:             | Synthetic peptide corresponding to amino acids 25-39 of human ACTH protein.   |
| Sequence:              | NGAEDESAEAFPLEF   |
| Host:                  | Mouse   |
| Clonality:             | Monoclonal  |
| Clone ID:              | CLIP/1449   |
| Isotype:               | IgG1  |
| Light Chains:          | kappa   |
| Conjugate:             | Unconjugated  |
| Purification:          | Protein A/G chromatography.   |
| Concentration:         | 1 mg/ml   |
| Product Form:          | Liquid  |
| Formulation:           | Supplied in 10mM Phosphate Buffered Saline; without Sodium Azide and carrier free.  |
| Storage:               | Shipped at 4°C. Upon delivery aliquot and store at -20°C. Avoid freeze / thaw cycles.   |
| General Notes:         | This monoclonal antibody is also available in a different formulation with BSA and Sodium Azide - Anti-ACTH Antibody [CLIP/1449] (A249666). |
| Disclaimer:            | This product is for research use only. It is not intended for diagnostic or therapeutic use.  |

## Anti-ACTH Antibody [CLIP/1449] - BSA and Azide free (A252846)

### Images:



Immunohistochemical analysis of formalin-fixed, paraffin-embedded human pituitary using Anti-ACTH Antibody [CLIP/1449].



SDS-PAGE analysis of Anti-ACTH Antibody [CLIP/1449] under non-reduced and reduced conditions; showing intact IgG and intact heavy and light chains, respectively. SDS-PAGE analysis confirms the integrity and purity of the antibody.