

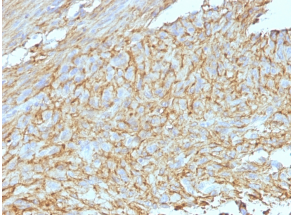
Anti-TMEM16A Antibody [DG1/447 + DOG-1.1] - BSA and Azide free (A252877)

Specifications:

Name:	Anti-TMEM16A Antibody [DG1/447 + DOG-1.1] - BSA and Azide free
Description:	Mouse monoclonal [DG1/447 + DOG-1.1] antibody to TMEM16A.
Applications:	IHC-P
Recommended Dilutions:	IHC-P: 1-2 µg/ml
Reactivity:	Human
Immunogen:	Clone DG1/447: Recombinant human DOG-1 protein. DOG-1.1: A synthetic peptide from human DOG-1 protein (MSDFVDWVIPDIPKDISQQIHKEKVLMLVELFMREEQDKQQLL-ETCMEKERQKDEPPCNHHNTK) conjugated to a carrier protein.
Host:	Mouse
Clonality:	Oligoclonal
Clone ID:	DG1/447 + DOG-1.1
Isotype:	IgG1, kappa + IgG1, kappa
Conjugate:	Unconjugated
Purification:	Protein A/G chromatography.
Concentration:	1 mg/ml
Product Form:	Liquid
Formulation:	Supplied in 10mM Phosphate Buffered Saline; without Sodium Azide and carrier free.
Storage:	Shipped at 4°C. Upon delivery aliquot and store at -20°C. Avoid freeze / thaw cycles.
General Notes:	Please note, this product is an oligoclonal antibody; it is a cocktail of monoclonal antibodies that have been carefully selected. Oligoclonal antibodies not only have the specificity and batch-to-batch consistency of a monoclonal antibody, but they also have the advantage of the sensitivity of a polyclonal antibody due to their ability to recognize multiple epitopes on an antigen. This oligoclonal antibody is also available in a different formulation with BSA and Sodium Azide - Anti-TMEM16A Antibody [DG1/447 + DOG-1.1] (A249697).
Disclaimer:	This product is for research use only. It is not intended for diagnostic or therapeutic use.

Anti-TMEM16A Antibody [DG1/447 + DOG-1.1] - BSA and Azide free (A252877)

Images:



Immunohistochemical analysis of formalin-fixed, paraffin-embedded human GIST using Anti-TMEM16A Antibody [DG1/447 + DOG-1.1].