

## Anti-beta 2 Microglobulin Antibody [B2M/961] - BSA and Azide free (A252932)

### Specifications:

Name:	Anti-beta 2 Microglobulin Antibody [B2M/961] - BSA and Azide free
Description:	Mouse monoclonal [B2M/961] antibody to beta 2 Microglobulin.
Specificity:	This antibody recognizes a protein of 12kDa, identified as beta-2 microglobulin. Major histocompatibility complex (MHC) class 1 molecules bind to antigens for presentation on the surface of cells. The proteasome is responsible for producing these antigens from the components of foreign pathogens. MHC class 1 molecules consist of an alpha heavy chain that contains three subdomains (alpha1, alpha2, alpha3) and a non-covalent associating light chain, known as beta-2-Microglobulin. Beta-2-Microglobulin associates with the alpha3 subdomain of the alpha heavy chain and forms an immunoglobulin domain-like structure that mediates proper folding and expression of MHC class 1 molecules. The alpha1 and alpha2 domains of the alpha heavy chain form the peptide antigen-binding cleft. Mutations in the beta-2-Microglobulin gene can enhance the progression of malignant melanoma phenotypes.
Applications:	Flow Cytometry, IF, WB, IHC-P
Recommended Dilutions:	Flow Cytometry: 1-2 µg/million cells, IF: 1-4 µg/ml, WB: 1-2 µg/ml, IHC-P: 1-2 µg/ml
Reactivity:	Human, Non-Human Primates
Immunogen:	Recombinant full-length human B2M protein.
Host:	Mouse
Clonality:	Monoclonal
Clone ID:	B2M/961
Isotype:	IgG2b
Light Chains:	kappa
Conjugate:	Unconjugated
Purification:	Protein A/G chromatography.
Concentration:	1 mg/ml
Product Form:	Liquid
Formulation:	Supplied in 10mM Phosphate Buffered Saline; without Sodium Azide and carrier free.
Storage:	Shipped at 4°C. Upon delivery aliquot and store at -20°C. Avoid freeze / thaw cycles.

## Anti-beta 2 Microglobulin Antibody [B2M/961] - BSA and Azide free (A252932)

### Specifications continued:

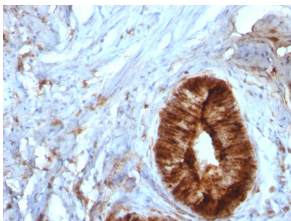
#### General Notes:

This monoclonal antibody is also available in a different formulation with BSA and Sodium Azide - Anti-beta 2 Microglobulin Antibody [B2M/961] (A249752).

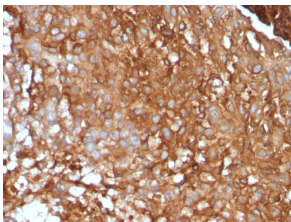
#### Disclaimer:

This product is for research use only. It is not intended for diagnostic or therapeutic use.

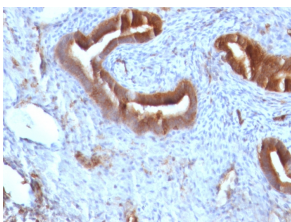
### Images:



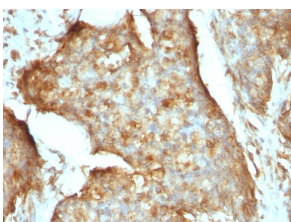
Immunohistochemical analysis of formalin-fixed, paraffin-embedded human cervical carcinoma using Anti-beta 2 Microglobulin Antibody [B2M/961].



Immunohistochemical analysis of formalin-fixed, paraffin-embedded human melanoma using Anti-beta 2 Microglobulin Antibody [B2M/961].



Immunohistochemical analysis of formalin-fixed, paraffin-embedded human endometrial carcinoma using Anti-beta 2 Microglobulin Antibody [B2M/961].



Immunohistochemical analysis of formalin-fixed, paraffin-embedded human gastric carcinoma using Anti-beta 2 Microglobulin Antibody [B2M/961].