

Anti-CD45RA Antibody [111-1C5] - BSA and Azide free (A252993)

Specifications:

Name:	Anti-CD45RA Antibody [111-1C5] - BSA and Azide free
Description:	Mouse monoclonal [111-1C5] antibody to CD45RA.
Specificity:	This antibody recognizes a protein of 205kDa-220kDa, identified as CD45RA which is an isoform of the human leukocyte common antigen (CD45). Human CD45 contains three exons which encode peptide segments designated A, B and C, respectively. The differential splicing of the exons generates at least five isoforms, ABC, AB, BC, B and O. This antibody reacts with ABC and BC isoforms. CD45RA is expressed on 40-50% of peripheral CD4+ T-cells, 50% of peripheral CD8+ T-cells, B-cells, and leukemic B-cell lines. T-cells expressing CD45RA are naive or virgin T-cells. T-cells expressing CD45RO are memory T-cells. CD45RA and CD45RO define complementary, predominantly non-overlapping populations of resting peripheral T-cells. This MAb is useful in study on the subpopulation of CD4+ or CD8+ T-cells. It can especially be used to differentiate T-cell lymphomas (CD45RO +ve) from B cell lymphomas (CD45RA +ve).
Applications:	Flow Cytometry, IF, WB, IHC-P
Recommended Dilutions:	Flow Cytometry: 1-2 µg/million cells, IF: 1-2 µg/ml, WB: 1-2 µg/ml, IHC-P: 1-2 µg/ml
Reactivity:	Human
Immunogen:	Stimulated human leukocytes.
Host:	Mouse
Clonality:	Monoclonal
Clone ID:	111-1C5
Isotype:	IgG1
Light Chains:	kappa
Conjugate:	Unconjugated
Purification:	Protein A/G chromatography.
Concentration:	1 mg/ml
Product Form:	Liquid
Formulation:	Supplied in 10mM Phosphate Buffered Saline; without Sodium Azide and carrier free.
Storage:	Shipped at 4°C. Upon delivery aliquot and store at -20°C. Avoid freeze / thaw cycles.

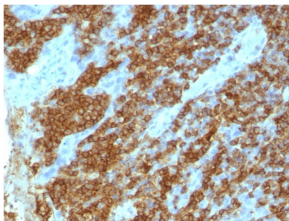
Anti-CD45RA Antibody [111-1C5] - BSA and Azide free (A252993)

Specifications continued:

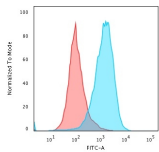
General Notes: This monoclonal antibody is also available in a different formulation with BSA and Sodium Azide - Anti-CD45RA Antibody [111-1C5] (A249813).

Disclaimer: This product is for research use only. It is not intended for diagnostic or therapeutic use.

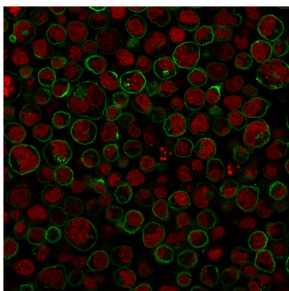
Images:



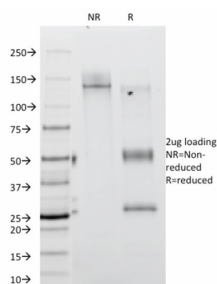
Immunohistochemical analysis of formalin-fixed, paraffin-embedded human tonsil using Anti-CD45RA Antibody [111-1C5].



Flow cytometric analysis of paraformaldehyde fixed Raji cells using Anti-CD45RA Antibody [111-1C5] followed by Goat Anti-Mouse IgG (CF® 488) (Blue). Isotype Control (Red).



Immunofluorescent analysis of paraformaldehyde fixed Raji cells stained with Anti-CD45RA Antibody [111-1C5] followed by Goat Anti-Mouse IgG (CF® 488) (Green). Counterstain is Phalloidin (Red).



SDS-PAGE analysis of Anti-CD45RA Antibody [111-1C5] under non-reduced and reduced conditions; showing intact IgG and intact heavy and light chains, respectively. SDS-PAGE analysis confirms the integrity and purity of the antibody.