

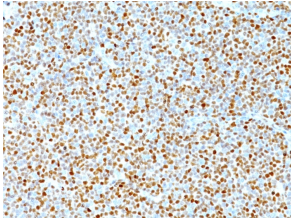
Anti-Cyclin D1 Antibody [DCS-6] - BSA and Azide free (A253036)

Specifications:

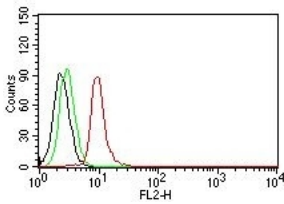
Name:	Anti-Cyclin D1 Antibody [DCS-6] - BSA and Azide free
Description:	Mouse monoclonal [DCS-6] antibody to Cyclin D1.
Specificity:	This antibody recognizes a protein of 36kDa, identified as cyclin D1. Cyclin D1, one of the key cell cycle regulators, is a putative proto-oncogene overexpressed in a wide variety of human neoplasms. This antibody neutralizes the activity of cyclin D1 in vivo. About 60% of mantle cell lymphomas (MCL) contain a t(11; 14)(q13; q32) translocation resulting in over-expression of cyclin D1. This antibody is useful in identifying mantle cell lymphomas (cyclin D1 positive) from CLL/SLL and follicular lymphomas (cyclin D1 negative). About 40% of breast carcinomas are positive for Cyclin D1. Occasionally, hairy cell leukemia and plasma cell myeloma weakly express Cyclin D1.
Applications:	Flow Cytometry, IF, WB, IHC-P
Recommended Dilutions:	Flow Cytometry: 1-2 µg/million cells, IF: 1-2 µg/ml, WB: 1-2 µg/ml, IHC-P: 1-2 µg/ml
Reactivity:	Human, Monkey, Mouse, Rat
Immunogen:	Recombinant full-length human Cyclin D1 protein.
Host:	Mouse
Clonality:	Monoclonal
Clone ID:	DCS-6
Isotype:	IgG2a
Light Chains:	kappa
Conjugate:	Unconjugated
Purification:	Protein A/G chromatography.
Concentration:	1 mg/ml
Product Form:	Liquid
Formulation:	Supplied in 10mM Phosphate Buffered Saline; without Sodium Azide and carrier free.
Storage:	Shipped at 4°C. Upon delivery aliquot and store at -20°C. Avoid freeze / thaw cycles.
General Notes:	This monoclonal antibody is also available in a different formulation with BSA and Sodium Azide - Anti-Cyclin D1 Antibody [DCS-6] (A249856).
Disclaimer:	This product is for research use only. It is not intended for diagnostic or therapeutic use.

Anti-Cyclin D1 Antibody [DCS-6] - BSA and Azide free (A253036)

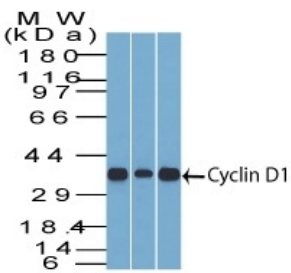
Images:



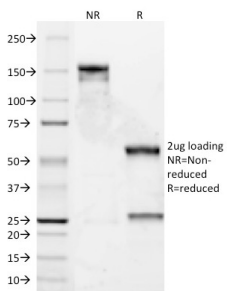
Immunohistochemical analysis of formalin-fixed, paraffin-embedded human mantle cell lymphoma using Anti-Cyclin D1 Antibody [DCS-6].



Flow cytometric analysis of Jurkat cells labeling Cyclin D1 with Anti-Cyclin D1 Antibody [DCS-6] (PE) (Red). Cells alone (Black). Isotype Control (Green).



Western blot analysis of (Lane 1) C2C12 cell line lysate, (Lane 2) HepG2 cell line lysate, and (Lane 3) NIH3T3 cell line lysate using Anti-Cyclin D1 Antibody [DCS-6].



SDS-PAGE analysis of Anti-Cyclin D1 Antibody [DCS-6] under non-reduced and reduced conditions; showing intact IgG and intact heavy and light chains, respectively. SDS-PAGE analysis confirms the integrity and purity of the antibody.