

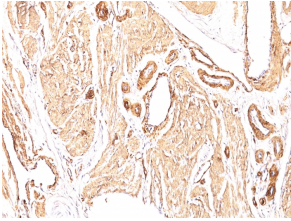
Anti-alpha Smooth Muscle Actin Antibody [1A4] - BSA and Azide free (A253074)

Specifications:

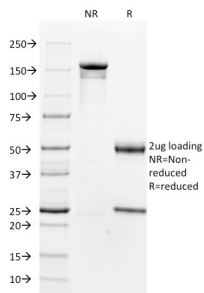
Name:	Anti-alpha Smooth Muscle Actin Antibody [1A4] - BSA and Azide free
Description:	Mouse monoclonal [1A4] antibody to alpha Smooth Muscle Actin.
Specificity:	This antibody is highly specific to Actin from smooth muscles; its epitope lies in the first four N-terminal amino acids. This antibody does not stain cardiac or skeletal muscle, however, it does stain myofibroblasts and myoepithelial cells.
Applications:	Flow Cytometry, IF, IHC-P
Recommended Dilutions:	Flow Cytometry: 1-2 µg/million cells, IF: 1-4 µg/ml, IHC-P: 0.25-0.5 µg/ml
Reactivity:	Human, Baboon, Monkey, Bovine, Porcine, Sheep, Goat, Feline, Canine, Rabbit, Mouse, Rat, Guinea Pig, Chicken
Immunogen:	N terminal decapeptide of alpha smooth muscle isoform of Actin, conjugated to KLH.
Host:	Mouse
Clonality:	Monoclonal
Clone ID:	1A4
Isotype:	IgG2a
Light Chains:	kappa
Conjugate:	Unconjugated
Purification:	Protein A/G chromatography.
Concentration:	1 mg/ml
Product Form:	Liquid
Formulation:	Supplied in 10mM Phosphate Buffered Saline; without Sodium Azide and carrier free.
Storage:	Shipped at 4°C. Upon delivery aliquot and store at -20°C. Avoid freeze / thaw cycles.
General Notes:	This antibody is also known as Clone asm-1. This monoclonal antibody is also available in a different formulation with BSA and Sodium Azide - Anti-alpha Smooth Muscle Actin Antibody [1A4] (A249894).
Disclaimer:	This product is for research use only. It is not intended for diagnostic or therapeutic use.

Anti-alpha Smooth Muscle Actin Antibody [1A4] - BSA and Azide free (A253074)

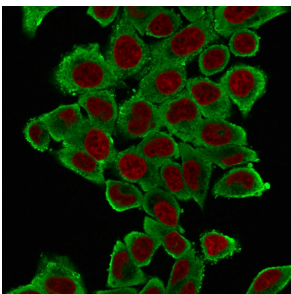
Images:



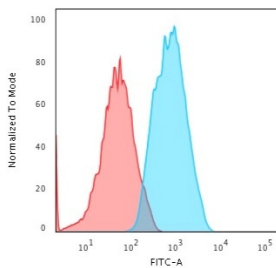
Immunohistochemical analysis of formalin-fixed, paraffin-embedded human leiomyosarcoma using Anti-alpha Smooth Muscle Actin Antibody [1A4].



SDS-PAGE analysis of Anti-alpha Smooth Muscle Actin Antibody [1A4] under non-reduced and reduced conditions; showing intact IgG and intact heavy and light chains, respectively. SDS-PAGE analysis confirms the integrity and purity of the antibody.



Immunofluorescent analysis of HeLa cells stained with Anti-alpha Smooth Muscle Actin Antibody [1A4] followed by Goat Anti-Mouse IgG (CF® 488) (Green). The nuclear counterstain is NucSpot (Red).



Flow cytometric analysis of human HeLa cells using Anti-alpha Smooth Muscle Actin Antibody [1A4] followed by Goat Anti-Mouse IgG (CF® 488) (Blue). Isotype Control (Red).