

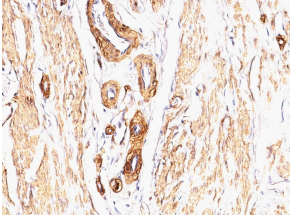
Anti-alpha Smooth Muscle Actin Antibody [SPM332] - BSA and Azide free (A253075)

Specifications:

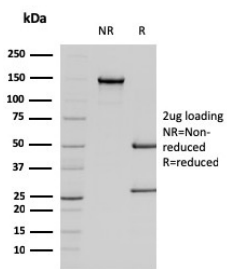
Name:	Anti-alpha Smooth Muscle Actin Antibody [SPM332] - BSA and Azide free
Description:	Mouse monoclonal [SPM332] antibody to alpha Smooth Muscle Actin.
Specificity:	This antibody is highly specific to Actin from smooth muscles; its epitope lies in the first four N-terminal amino acids. This antibody does not stain cardiac or skeletal muscle, however, it does stain myofibroblasts and myoepithelial cells.
Applications:	IF, IHC-P
Recommended Dilutions:	IF: 1-2 µg/ml, IHC-P: 1-2 µg/ml
Reactivity:	Human, Baboon, Monkey, Bovine, Porcine, Sheep, Goat, Feline, Canine, Rabbit, Mouse, Rat, Guinea Pig, Chicken
Immunogen:	N terminal decapeptide of alpha smooth muscle isoform of Actin, conjugated to KLH.
Host:	Mouse
Clonality:	Monoclonal
Clone ID:	SPM332
Isotype:	IgG2a
Light Chains:	kappa
Conjugate:	Unconjugated
Purification:	Protein A/G chromatography.
Concentration:	1 mg/ml
Product Form:	Liquid
Formulation:	Supplied in 10mM Phosphate Buffered Saline; without Sodium Azide and carrier free.
Storage:	Shipped at 4°C. Upon delivery aliquot and store at -20°C. Avoid freeze / thaw cycles.
General Notes:	This monoclonal antibody is also available in a different formulation with BSA and Sodium Azide - Anti-alpha Smooth Muscle Actin Antibody [SPM332] (A249895).
Disclaimer:	This product is for research use only. It is not intended for diagnostic or therapeutic use.

Anti-alpha Smooth Muscle Actin Antibody [SPM332] - BSA and Azide free (A253075)

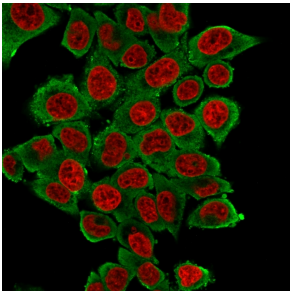
Images:



Immunohistochemical analysis of formalin-fixed, paraffin-embedded human leiomyosarcoma using Anti-alpha Smooth Muscle Actin Antibody [SPM332].



SDS-PAGE analysis of Anti-alpha Smooth Muscle Actin Antibody [SPM332] under non-reduced and reduced conditions; showing intact IgG and intact heavy and light chains, respectively. SDS-PAGE analysis confirms the integrity and purity of the antibody.



Immunofluorescent analysis of HeLa cells stained with Anti-alpha Smooth Muscle Actin Antibody [SPM332] followed by Goat Anti-Mouse IgG (CF® 488) (Green). The nuclear counterstain is NucSpot (Red).