

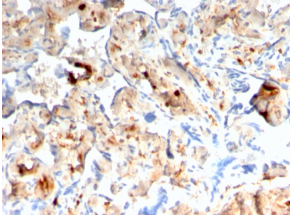
Anti-S100A4 Antibody [rS100A4/1481] - BSA and Azide free (A253103)

Specifications:

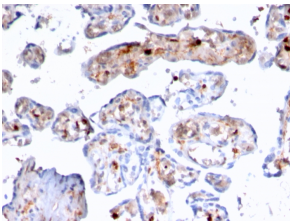
Name:	Anti-S100A4 Antibody [rS100A4/1481] - BSA and Azide free
Description:	Recombinant mouse monoclonal [rS100A4/1481] antibody to S100A4.
Specificity:	S100A4 belongs to the S100 super-family of proteins containing 2 EF-hand calcium-binding domains. S100 genes include at least 25 members, including S100A1-S100A18, trichohyalin, filaggrin, repetin, S100P, and S100Z. S100A4 exerts its function via direct interaction with a number of proteins including P53, P63, non-muscle myosin IIA, 64 integrin, and liprin b1. S100A4 is overexpressed in highly metastatic cancers, which makes it useful as a marker of tumor progression.
Applications:	Flow Cytometry, WB, IF, IHC-P
Recommended Dilutions:	Flow Cytometry: 1-2 µg/million cells, WB: 1-2 µg/ml, IF: 1-2 µg/ml, IHC-P: 1-2 µg/ml
Reactivity:	Human, Mouse
Immunogen:	Recombinant fragment, around amino acids 1-200, of human S100A4 protein. The exact sequence is proprietary.
Host:	Mouse
Clonality:	Monoclonal
Clone ID:	rS100A4/1481
Isotype:	IgG1
Light Chains:	kappa
Conjugate:	Unconjugated
Purification:	Protein A/G chromatography.
Concentration:	1 mg/ml
Product Form:	Liquid
Formulation:	Supplied in 10mM Phosphate Buffered Saline; without Sodium Azide and carrier free.
Storage:	Shipped at 4°C. Upon delivery aliquot and store at -20°C. Avoid freeze / thaw cycles.
General Notes:	This monoclonal antibody is also available in a different formulation with BSA and Sodium Azide - Anti-S100A4 Antibody [rS100A4/1481] (A249923).
Disclaimer:	This product is for research use only. It is not intended for diagnostic or therapeutic use.

Anti-S100A4 Antibody [rS100A4/1481] - BSA and Azide free (A253103)

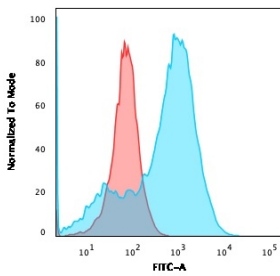
Images:



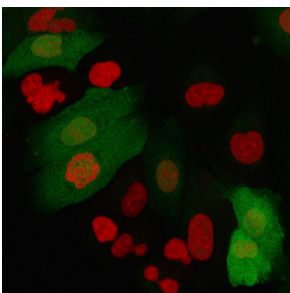
Immunohistochemical analysis of formalin-fixed, paraffin-embedded human placenta using Anti-S100A4 Antibody [rS100A4/1481].



Immunohistochemical analysis of formalin-fixed, paraffin-embedded human placenta using Anti-S100A4 Antibody [rS100A4/1481].



Flow cytometric analysis of A549 cells using Anti-S100A4 Antibody [rS100A4/1481] followed by Goat Anti-Mouse IgG (CF@ 488) (Blue). Isotype Control (Red).



Immunofluorescent analysis of A549 cells stained with Anti-S100A4 Antibody [rS100A4/1481] followed by Goat Anti-Mouse IgG (CF@ 488) (Green). Nuclei are stained with RedDot.