

## Anti-S100 beta Antibody [rS100B/1896] - BSA and Azide free (A253118)

### Specifications:

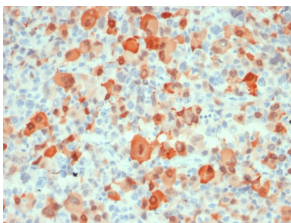
Name:	Anti-S100 beta Antibody [rS100B/1896] - BSA and Azide free
Description:	Recombinant mouse monoclonal [rS100B/1896] antibody to S100 beta.
Specificity:	<p>The specificity of this monoclonal antibody to its intended target was validated by HuProt™ Array, containing more than 19,000 full-length human proteins. S100 belongs to the family of calcium binding proteins. S100A and S100B proteins are two members of the S100 family. S100A is composed of an alpha and a beta chain whereas S100B is composed of two beta chains. This antibody is specific against an epitope located on the beta-chain (i.e. in S-100A and S-100B) but not on the alpha-chain of S-100 (i.e. in S-100A and S100A0). This antibody can be used to localize S-100A and S-100B in various tissue sections. S-100 protein has been found in normal melanocytes, Langerhans cells, histiocytes, chondrocytes, lipocytes, skeletal and cardiac muscle, Schwann cells, epithelial and myoepithelial cells of the breast, salivary and sweat glands, as well as in glial cells. Neoplasms derived from these cells also express S-100 protein, albeit non-uniformly. A large number of well-differentiated tumors of the salivary gland, adipose and cartilaginous tissue, and Schwann cell-derived tumors express S-100 protein. Almost all malignant melanomas and cases of histiocytosis X are positive for S-100 protein.</p>
Applications:	WB, IHC-P
Recommended Dilutions:	WB: 1-2 µg/ml, IHC-P: 1-2 µg/ml
Reactivity:	Human, Mouse, Rat, Bovine
Immunogen:	Recombinant full-length human S100B protein.
Host:	Mouse
Clonality:	Monoclonal
Clone ID:	rS100B/1896
Isotype:	IgG1
Light Chains:	kappa
Conjugate:	Unconjugated
Purification:	Protein A/G chromatography.
Concentration:	1 mg/ml
Product Form:	Liquid
Formulation:	Supplied in 10mM Phosphate Buffered Saline; without Sodium Azide and carrier free.

## Anti-S100 beta Antibody [rS100B/1896] - BSA and Azide free (A253118)

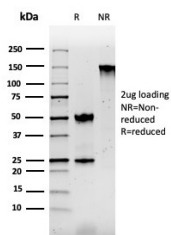
### Specifications continued:

Storage:	Shipped at 4°C. Upon delivery aliquot and store at -20°C. Avoid freeze / thaw cycles.
General Notes:	This monoclonal antibody is also available in a different formulation with BSA and Sodium Azide - Anti-S100 beta Antibody [rS100B/1896] (A249938).
Disclaimer:	This product is for research use only. It is not intended for diagnostic or therapeutic use.

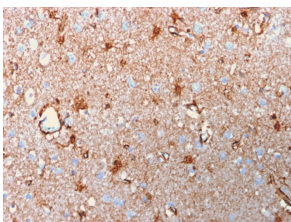
### Images:



Immunohistochemical analysis of formalin-fixed, paraffin-embedded human melanoma using Anti-S100 beta Antibody [rS100B/1896].



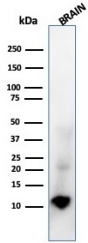
SDS-PAGE analysis of Anti-S100 beta Antibody [rS100B/1896] under non-reduced and reduced conditions; showing intact IgG and intact heavy and light chains, respectively. SDS-PAGE analysis confirms the integrity and purity of the antibody.



Immunohistochemical analysis of formalin-fixed, paraffin-embedded human brain using Anti-S100 beta Antibody [rS100B/1896].

# Anti-S100 beta Antibody [rS100B/1896] - BSA and Azide free (A253118)

Images continued:



Western blot analysis of human brain tissue lysate using Anti-S100 beta Antibody [rS100B/1896].