

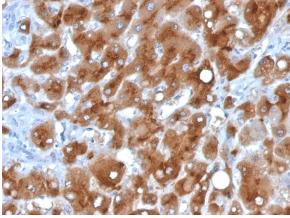
## Anti-Serum Amyloid A Antibody [SAA/326] - BSA and Azide free (A253123)

### Specifications:

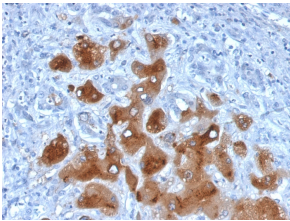
Name:	Anti-Serum Amyloid A Antibody [SAA/326] - BSA and Azide free
Description:	Mouse monoclonal [SAA/326] antibody to Serum Amyloid A.
Specificity:	This antibody reacts with natural and recombinant human Serum Amyloid A (SAA) and does not cross-react with other human cytokines or growth factors. Human SAA proteins are a group of apo-lipoproteins found predominantly in the high-density lipoprotein (HDL) fraction of plasma. SAA is a major acute-phase protein and precursor to amyloid A protein, which is the major constituent of the fibril deposits of reactive amyloidosis. SAA is secreted in large amounts by the liver during microbial infections or inflammatory diseases.
Applications:	IHC-P
Recommended Dilutions:	IHC-P: 1-2 µg/ml
Reactivity:	Human
Immunogen:	Recombinant full-length human Serum Amyloid A protein.
Host:	Mouse
Clonality:	Monoclonal
Clone ID:	SAA/326
Isotype:	IgG2a
Light Chains:	kappa
Conjugate:	Unconjugated
Purification:	Protein A/G chromatography.
Concentration:	1 mg/ml
Product Form:	Liquid
Formulation:	Supplied in 10mM Phosphate Buffered Saline; without Sodium Azide and carrier free.
Storage:	Shipped at 4°C. Upon delivery aliquot and store at -20°C. Avoid freeze / thaw cycles.
General Notes:	This monoclonal antibody is also available in a different formulation with BSA and Sodium Azide - Anti-Serum Amyloid A Antibody [SAA/326] (A249943).
Disclaimer:	This product is for research use only. It is not intended for diagnostic or therapeutic use.

## Anti-Serum Amyloid A Antibody [SAA/326] - BSA and Azide free (A253123)

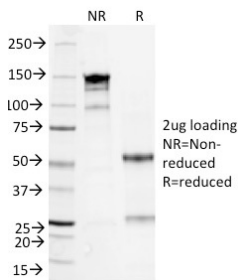
### Images:



Immunohistochemical analysis of formalin-fixed, paraffin-embedded human hepatocellular carcinoma using Anti-Serum Amyloid A Antibody [SAA/326].



Immunohistochemical analysis of formalin-fixed, paraffin-embedded human hepatocellular carcinoma using Anti-Serum Amyloid A Antibody [SAA/326].



SDS-PAGE analysis of Anti-Serum Amyloid A Antibody [SAA/326] under non-reduced and reduced conditions; showing intact IgG and intact heavy and light chains, respectively. SDS-PAGE analysis confirms the integrity and purity of the antibody.