

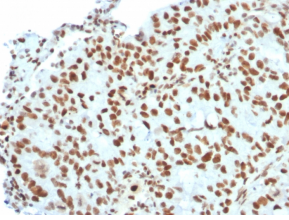
Anti-BMI1 Antibody [BMI1/2823] - BSA and Azide free (A253146)

Specifications:

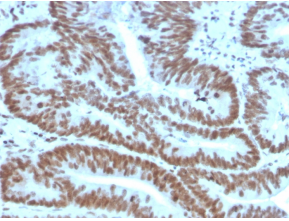
Name:	Anti-BMI1 Antibody [BMI1/2823] - BSA and Azide free
Description:	Mouse monoclonal [BMI1/2823] antibody to BMI1.
Specificity:	The B cell-specific moloney murine leukemia virus integration site 1 (Bmi-1) is a transcriptional receptor of the polycomb gene family involved in several cellular processes including cell-cycle regulation, apoptosis, and maintenance of adult and neoplastic stem cells by providing self-renewal capacity. Further, Bmi-1 expression has been associated with malignant transformation, tumor progression, metastatic disease, and poor prognosis in human malignancies.
Applications:	WB, IF, IHC-P
Recommended Dilutions:	WB: 1-2 µg/ml, IF: 1-2 µg/ml, IHC-P: 1-2 µg/ml
Reactivity:	Human, Mouse
Immunogen:	Recombinant fragment, around amino acids 142-326, of human BMI1 protein. The exact sequence is proprietary.
Host:	Mouse
Clonality:	Monoclonal
Clone ID:	BMI1/2823
Isotype:	IgG1
Light Chains:	kappa
Conjugate:	Unconjugated
Purification:	Protein A/G chromatography.
Concentration:	1 mg/ml
Product Form:	Liquid
Formulation:	Supplied in 10mM Phosphate Buffered Saline; without Sodium Azide and carrier free.
Storage:	Shipped at 4°C. Upon delivery aliquot and store at -20°C. Avoid freeze / thaw cycles.
General Notes:	This monoclonal antibody is also available in a different formulation with BSA and Sodium Azide - Anti-BMI1 Antibody [BMI1/2823] (A249966).
Disclaimer:	This product is for research use only. It is not intended for diagnostic or therapeutic use.

Anti-BMI1 Antibody [BMI1/2823] - BSA and Azide free (A253146)

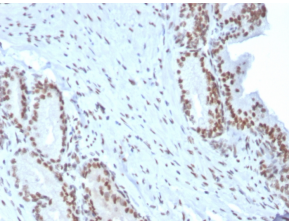
Images:



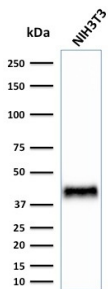
Immunohistochemical analysis of formalin-fixed, paraffin-embedded human breast carcinoma using Anti-BMI1 Antibody [BMI1/2823].



Immunohistochemical analysis of formalin-fixed, paraffin-embedded human colon carcinoma using Anti-BMI1 Antibody [BMI1/2823].



Immunohistochemical analysis of formalin-fixed, paraffin-embedded human prostate carcinoma using Anti-BMI1 Antibody [BMI1/2823].



Western blot analysis of human NIH3T3 cell lysate using Anti-BMI1 Antibody [BMI1/2823].