

Anti-Melanoma gp100 Antibody [SPM142] - BSA and Azide free (A253148)

Specifications:

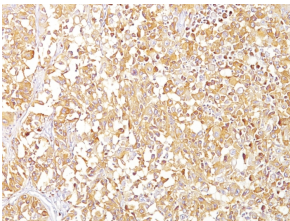
Name:	Anti-Melanoma gp100 Antibody [SPM142] - BSA and Azide free
Description:	Mouse monoclonal [SPM142] antibody to Melanoma gp100.
Specificity:	The gp100 molecule is a 100kDa glycosylated protein that is cleaved into a small (26kDa) carboxy-terminal fragment and a larger amino-terminal section (60-64 kDa), which is subsequently cleaved to generate 26kDa and 34-38kDa fragments. By immunohistochemistry, it specifically recognizes a protein in melanocytes and melanomas. This MAb reacts with junctional and blue nevus cells and variably with fetal and neonatal melanocytes. Intradermal nevi, normal adult melanocytes, and non-melanocytic cells are negative. It does not stain tumor cells of epithelial, lymphoid, glial, or mesenchymal origin. Metastatic amelanotic melanoma can often be confused with a variety of poorly differentiated carcinomas, large cell lymphomas, and sarcomas using H E stains alone. It is also difficult to differentiate melanoma from spindle cell carcinomas and various types of mesenchymal neoplasms. It stains fetal and neonatal melanocytes, junctional and blue nevus cells, and malignant melanoma. This MAb also stains Angiomyolipoma.
Applications:	Flow Cytometry, IF, WB, IHC-P
Recommended Dilutions:	Flow Cytometry: 1-2 µg/million cells, IF: 1-2 µg/ml, WB: 2-4 µg/ml, IHC-P: 1-2 µg/ml
Reactivity:	Human
Cross Reactivity:	This antibody does not cross react with Rat or Canine.
Immunogen:	Extract of pigmented melanoma metastases from lymph nodes.
Host:	Mouse
Clonality:	Monoclonal
Clone ID:	SPM142
Isotype:	IgG1
Light Chains:	kappa
Conjugate:	Unconjugated
Purification:	Protein A/G chromatography.
Concentration:	1 mg/ml
Product Form:	Liquid
Formulation:	Supplied in 10mM Phosphate Buffered Saline; without Sodium Azide and carrier free.

Anti-Melanoma gp100 Antibody [SPM142] - BSA and Azide free (A253148)

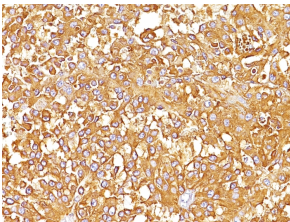
Specifications continued:

Storage:	Shipped at 4°C. Upon delivery aliquot and store at -20°C. Avoid freeze / thaw cycles.
General Notes:	This monoclonal antibody is also available in a different formulation with BSA and Sodium Azide - Anti-Melanoma gp100 Antibody [SPM142] (A249968).
Disclaimer:	This product is for research use only. It is not intended for diagnostic or therapeutic use.

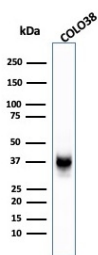
Images:



Immunohistochemical analysis of formalin-fixed, paraffin-embedded human melanoma using Anti-Melanoma gp100 Antibody [SPM142].



Immunohistochemical analysis of formalin-fixed, paraffin-embedded human melanoma using Anti-Melanoma gp100 Antibody [SPM142].



Western blot analysis of COLO-38 cell lysate using Anti-Melanoma gp100 Antibody [SPM142].