

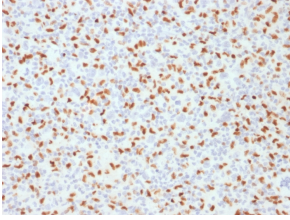
## Anti-PU.1 Antibody [PU1/2146] - BSA and Azide free (A253203)

### Specifications:

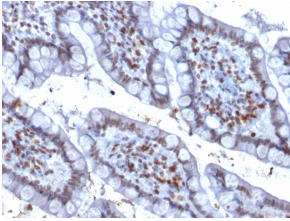
Name:	Anti-PU.1 Antibody [PU1/2146] - BSA and Azide free
Description:	Mouse monoclonal [PU1/2146] antibody to PU.1 .
Applications:	Flow Cytometry, IF, WB, IHC-P
Recommended Dilutions:	Flow Cytometry: 1-2 µg/million cells, IF: 1-2 µg/ml, WB: 1-2 µg/ml, IHC-P: 1-2 µg/ml
Reactivity:	Human
Immunogen:	Recombinant fragment, around amino acids 16-170, of human PU.1 protein. The exact sequence is proprietary.
Host:	Mouse
Clonality:	Monoclonal
Clone ID:	PU1/2146
Isotype:	IgG2b
Light Chains:	kappa
Conjugate:	Unconjugated
Purification:	Protein A/G chromatography.
Concentration:	1 mg/ml
Product Form:	Liquid
Formulation:	Supplied in 10mM Phosphate Buffered Saline; without Sodium Azide and carrier free.
Storage:	Shipped at 4°C. Upon delivery aliquot and store at -20°C. Avoid freeze / thaw cycles.
General Notes:	This monoclonal antibody is also available in a different formulation with BSA and Sodium Azide - Anti-PU.1 Antibody [PU1/2146] (A250023).
Disclaimer:	This product is for research use only. It is not intended for diagnostic or therapeutic use.

## Anti-PU.1 Antibody [PU1/2146] - BSA and Azide free (A253203)

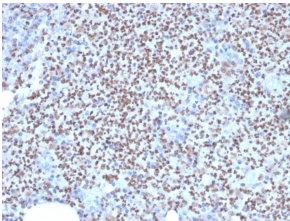
### Images:



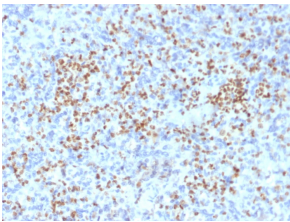
Immunohistochemical analysis of formalin-fixed, paraffin-embedded human Hodgkin's lymphoma using Anti-PU.1 Antibody [PU1/2146].



Immunohistochemical analysis of formalin-fixed, paraffin-embedded human colon carcinoma using Anti-PU.1 Antibody [PU1/2146].



Immunohistochemical analysis of formalin-fixed, paraffin-embedded human lymph node using Anti-PU.1 Antibody [PU1/2146].



Immunohistochemical analysis of formalin-fixed, paraffin-embedded human spleen using Anti-PU.1 Antibody [PU1/2146].