

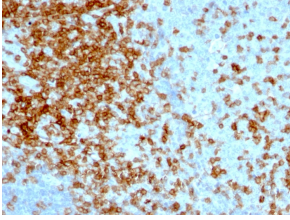
Anti-CD43 Antibody [84-3C1] - BSA and Azide free (A253209)

Specifications:

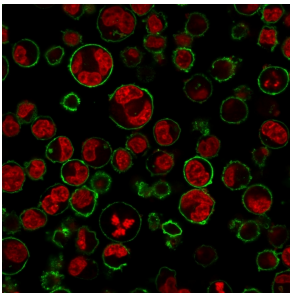
Name:	Anti-CD43 Antibody [84-3C1] - BSA and Azide free
Description:	Mouse monoclonal [84-3C1] antibody to CD43.
Applications:	Flow Cytometry, IF, WB, IHC-P
Recommended Dilutions:	Flow Cytometry: 1-2 µg/million cells, IF: 1-2 µg/ml, WB: 1-2 µg/ml, IHC-P: 1-2 µg/ml
Reactivity:	Human
Immunogen:	Stimulated human leukocytes.
Host:	Mouse
Clonality:	Monoclonal
Clone ID:	84-3C1
Isotype:	IgG1
Light Chains:	kappa
Conjugate:	Unconjugated
Purification:	Protein A/G chromatography.
Concentration:	1 mg/ml
Product Form:	Liquid
Formulation:	Supplied in 10mM Phosphate Buffered Saline; without Sodium Azide and carrier free.
Storage:	Shipped at 4°C. Upon delivery aliquot and store at -20°C. Avoid freeze / thaw cycles.
General Notes:	This monoclonal antibody is also available in a different formulation with BSA and Sodium Azide - Anti-CD43 Antibody [84-3C1] (A250029).
Disclaimer:	This product is for research use only. It is not intended for diagnostic or therapeutic use.

Anti-CD43 Antibody [84-3C1] - BSA and Azide free (A253209)

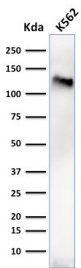
Images:



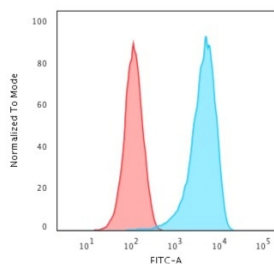
Immunohistochemical analysis of formalin-fixed, paraffin-embedded human tonsil using Anti-CD43 Antibody [84-3C1].



Immunofluorescent analysis of K562 cells stained with Anti-CD43 Antibody [84-3C1] followed by Goat Anti-Mouse IgG (CF® 488) (Green). The nuclear counterstain is NucSpot.



Western blot analysis of K562 cell lysate using Anti-CD43 Antibody [84-3C1].



Flow cytometric analysis of human K562 cells using Anti-CD43 Antibody [84-3C1] followed by Goat Anti-Mouse IgG (CF® 488) (Blue). Isotype Control (Red).