

Anti-beta III Spectrin Antibody [SPTBN2/1583] - BSA and Azide free (A253225)

Specifications:

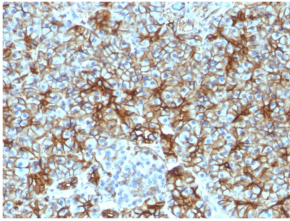
Name:	Anti-beta III Spectrin Antibody [SPTBN2/1583] - BSA and Azide free
Description:	Mouse monoclonal [SPTBN2/1583] antibody to beta III Spectrin .
Specificity:	Spectrin is an actin binding protein that is a major component of the plasma membrane skeleton. Spectrins function as membrane organizers and stabilizers by forming dimers, tetramers and higher polymers. Vertebrate spectrins have two alpha-subunits (alpha-I/alpha-II) four beta-subunits (beta-I-beta-IV) and a beta-H subunit creating diversity and specialization of function. Spectrin and spectrin are present in erythrocytes, whereas spectrin II (also designated fodrin) and spectrin I (also designated fodrin) are present in other somatic cells. The spectrin tetramers in erythrocytes act as barriers to lateral diffusion, but spectrin dimers seem to lack this function. Spectrin III is highly homologous to both spectrin I and spectrin II. Spectrin III is highly expressed in brain, kidney, pancreas and liver, and at lower levels in lung and placenta. Spectrin beta 3 is primarily expressed in nervous tissues with highest expression levels in the cerebellum, where it is found in Purkinje cell soma and dendrites.
Applications:	Flow Cytometry, WB, IHC-P
Recommended Dilutions:	Flow Cytometry: 1-2 µg/million cells, IF: 1-2 µg/ml, WB: 1-2 µg/ml, IHC-P: 1-2 µg/ml
Reactivity:	Human
Immunogen:	Recombinant fragment, around amino acids 356-475, of human SPTBN2 protein. The exact sequence is proprietary.
Host:	Mouse
Clonality:	Monoclonal
Clone ID:	SPTBN2/1583
Isotype:	IgG2b
Light Chains:	kappa
Conjugate:	Unconjugated
Purification:	Protein A/G chromatography.
Concentration:	1 mg/ml
Product Form:	Liquid
Formulation:	Supplied in 10mM Phosphate Buffered Saline; without Sodium Azide and carrier free.

Anti-beta III Spectrin Antibody [SPTBN2/1583] - BSA and Azide free (A253225)

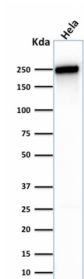
Specifications continued:

Storage:	Shipped at 4°C. Upon delivery aliquot and store at -20°C. Avoid freeze / thaw cycles.
General Notes:	This monoclonal antibody is also available in a different formulation with BSA and Sodium Azide - Anti-beta III Spectrin Antibody [SPTBN2/1583] (A250045).
Disclaimer:	This product is for research use only. It is not intended for diagnostic or therapeutic use.

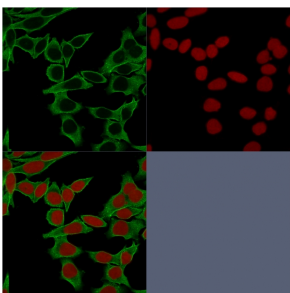
Images:



Immunohistochemical analysis of formalin-fixed, paraffin-embedded human pancreas using Anti-beta III Spectrin Antibody [SPTBN2/1583].



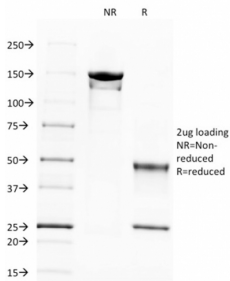
Western blot analysis of human HeLa cell lysate using Anti-beta III Spectrin Antibody [SPTBN2/1583].



Immunofluorescent analysis of HeLa cells stained with Anti-beta III Spectrin Antibody [SPTBN2/1583] (CF® 488) (Green). Nuclear counterstain is RedDot.

Anti-beta III Spectrin Antibody [SPTBN2/1583] - BSA and Azide free (A253225)

Images continued:



SDS-PAGE analysis of Anti-beta III Spectrin Antibody [SPTBN2/1583] under non-reduced and reduced conditions; showing intact IgG and intact heavy and light chains, respectively. SDS-PAGE analysis confirms the integrity and purity of the antibody.