

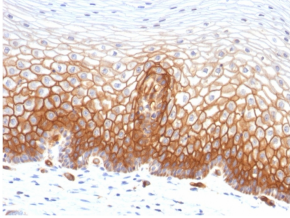
## Anti-Thrombomodulin Antibody [THBD/1591] - BSA and Azide free (A253304)

### Specifications:

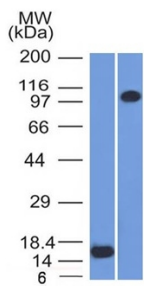
Name:	Anti-Thrombomodulin Antibody [THBD/1591] - BSA and Azide free
Description:	Mouse monoclonal [THBD/1591] antibody to Thrombomodulin.
Applications:	ELISA, WB, IHC-P
Recommended Dilutions:	WB: 1-2 µg/ml, IHC-P: 1-2 µg/ml
Reactivity:	Human
Immunogen:	Recombinant fragment, around amino acids 69-194, of human Thrombomodulin protein. The exact sequence is proprietary.
Host:	Mouse
Clonality:	Monoclonal
Clone ID:	THBD/1591
Isotype:	IgG2b
Light Chains:	kappa
Conjugate:	Unconjugated
Purification:	Protein A/G chromatography.
Concentration:	1 mg/ml
Product Form:	Liquid
Formulation:	Supplied in 10mM Phosphate Buffered Saline; without Sodium Azide and carrier free.
Storage:	Shipped at 4°C. Upon delivery aliquot and store at -20°C. Avoid freeze / thaw cycles.
General Notes:	This monoclonal antibody is also available in a different formulation with BSA and Sodium Azide - Anti-Thrombomodulin Antibody [THBD/1591] (A250124).
Disclaimer:	This product is for research use only. It is not intended for diagnostic or therapeutic use.

## Anti-Thrombomodulin Antibody [THBD/1591] - BSA and Azide free (A253304)

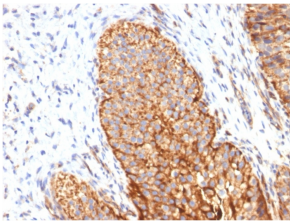
Images:



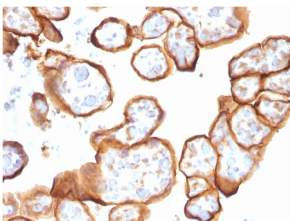
Immunohistochemical analysis of formalin-fixed, paraffin-embedded human cervical carcinoma using Anti-Thrombomodulin Antibody [THBD/1591].



Western blot analysis of (A) recombinant Thrombomodulin protein and (B) THP1 cell lysate using Anti-Thrombomodulin Antibody [THBD/1591].



Immunohistochemical analysis of formalin-fixed, paraffin-embedded human bladder carcinoma using Anti-Thrombomodulin Antibody [THBD/1591].



Immunohistochemical analysis of formalin-fixed, paraffin-embedded human placenta using Anti-Thrombomodulin Antibody [THBD/1591].