

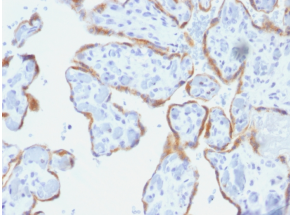
Anti-TIMP2 Antibody [SPM356] - BSA and Azide free (A253314)

Specifications:

Name:	Anti-TIMP2 Antibody [SPM356] - BSA and Azide free
Description:	Mouse monoclonal [SPM356] antibody to TIMP2.
Applications:	Flow Cytometry, IF, WB, IHC-P
Recommended Dilutions:	Flow Cytometry: 1-2 µg/million cells, IF: 1-2 µg/ml, WB: 1-2 µg/ml, IHC-P: 1-2 µg/ml
Reactivity:	Human, Mouse, Rat, Guinea Pig, Rabbit, Bovine, Zebrafish
Immunogen:	Synthetic peptide corresponding to amino acids 56-66 of human TIMP2 protein.
Sequence:	DSGNDIYGNPI
Host:	Mouse
Clonality:	Monoclonal
Clone ID:	SPM356
Isotype:	IgG2a
Light Chains:	kappa
Conjugate:	Unconjugated
Purification:	Protein A/G chromatography.
Concentration:	1 mg/ml
Product Form:	Liquid
Formulation:	Supplied in 10mM Phosphate Buffered Saline; without Sodium Azide and carrier free.
Storage:	Shipped at 4°C. Upon delivery aliquot and store at -20°C. Avoid freeze / thaw cycles.
General Notes:	This monoclonal antibody is also available in a different formulation with BSA and Sodium Azide - Anti-TIMP2 Antibody [SPM356] (A250134).
Disclaimer:	This product is for research use only. It is not intended for diagnostic or therapeutic use.

Anti-TIMP2 Antibody [SPM356] - BSA and Azide free (A253314)

Images:



Immunohistochemical analysis of formalin-fixed, paraffin-embedded human placenta using Anti-TIMP2 Antibody [SPM356].