

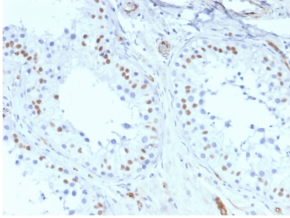
Anti-Wilms Tumor Protein Antibody [rWT1/857] - BSA and Azide free (A253514)

Specifications:

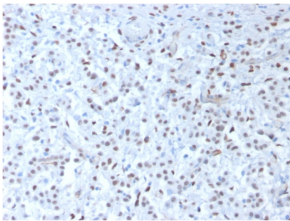
Name:	Anti-Wilms Tumor Protein Antibody [rWT1/857] - BSA and Azide free
Description:	Recombinant mouse monoclonal [rWT1/857] antibody to Wilms Tumor Protein.
Applications:	IHC-P
Recommended Dilutions:	IHC-P: 1-2 µg/ml
Reactivity:	Human, Mouse, Rat
Immunogen:	Recombinant full-length human WT1 protein.
Host:	Mouse
Clonality:	Monoclonal
Clone ID:	rWT1/857
Isotype:	IgG1
Light Chains:	kappa
Conjugate:	Unconjugated
Purification:	Protein A/G chromatography.
Concentration:	1 mg/ml
Product Form:	Liquid
Formulation:	Supplied in 10mM Phosphate Buffered Saline; without Sodium Azide and carrier free.
Storage:	Shipped at 4°C. Upon delivery aliquot and store at -20°C. Avoid freeze / thaw cycles.
General Notes:	This monoclonal antibody is also available in a different formulation with BSA and Sodium Azide - Anti-Wilms Tumor Protein Antibody [rWT1/857] (A250334).
Disclaimer:	This product is for research use only. It is not intended for diagnostic or therapeutic use.

Anti-Wilms Tumor Protein Antibody [rWT1/857] - BSA and Azide free (A253514)

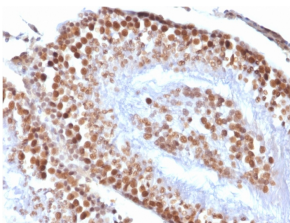
Images:



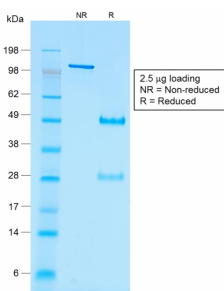
Immunohistochemical analysis of formalin-fixed, paraffin-embedded human testis using Anti-Wilms tumor Protein Antibody [rWT1/857].



Immunohistochemical analysis of formalin-fixed, paraffin-embedded human mesothelioma using Anti-Wilms tumor Protein Antibody [rWT1/857].



Immunohistochemical analysis of formalin-fixed, paraffin-embedded rat testis using Anti-Wilms tumor Protein Antibody [rWT1/857].



SDS-PAGE analysis of Anti-Wilms Tumor Protein Antibody [rWT1/857] under non-reduced and reduced conditions; showing intact IgG and intact heavy and light chains, respectively. SDS-PAGE analysis confirms the integrity and purity of the antibody.