

Anti-PAX8 Antibody [PAX8/1492] - BSA and Azide free (A253541)

Specifications:

Name:	Anti-PAX8 Antibody [PAX8/1492] - BSA and Azide free
Description:	Mouse monoclonal [PAX8/1492] antibody to PAX8.
Specificity:	This antibody recognizes a protein of 62kDa, identified as PAX8. It is a member of the paired box (PAX) family of transcription factors. This nuclear protein is involved in thyroid follicular cell development and expression of thyroid-specific genes. Mutations in this gene have been associated with thyroid dysgenesis, thyroid follicular carcinomas, and atypical thyroid adenomas. PAX-8 is expressed in the thyroid (and associated carcinomas), non-ciliated mucosal cells of the fallopian tubes, and simple ovarian inclusion cysts, but not normal ovarian surface epithelial cells. PAX-8 is expressed in a high percentage of ovarian serous, endometrioid, and clear cell carcinomas, but only rarely in primary ovarian mucinous adenocarcinomas. PAX-8 expression is reported in renal tubules as well as renal cell carcinoma, nephroblastoma, and seminoma. PAX-8 antibody may be used as an additional immunohistochemical marker for renal epithelial tumors.
Applications:	Flow Cytometry, IF, WB, IHC-P
Recommended Dilutions:	Flow Cytometry: 1-2 µg/million cells, IF: 1-2 µg/ml, WB: 1-2 µg/ml, IHC-P: 1-2 µg/ml
Reactivity:	Human
Immunogen:	Recombinant fragment, around amino acids 60-261, of human PAX8 protein. The exact sequence is proprietary.
Host:	Mouse
Clonality:	Monoclonal
Clone ID:	PAX8/1492
Isotype:	IgG2b
Light Chains:	kappa
Conjugate:	Unconjugated
Purification:	Protein A/G chromatography.
Concentration:	1 mg/ml
Product Form:	Liquid
Formulation:	Supplied in 10mM Phosphate Buffered Saline; without Sodium Azide and carrier free.
Storage:	Shipped at 4°C. Upon delivery aliquot and store at -20°C. Avoid freeze / thaw cycles.

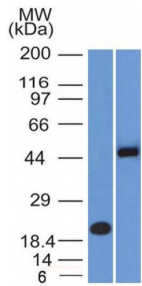
Anti-PAX8 Antibody [PAX8/1492] - BSA and Azide free (A253541)

Specifications continued:

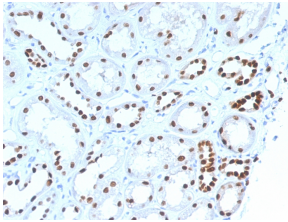
General Notes: This monoclonal antibody is also available in a different formulation with BSA and Sodium Azide - Anti-PAX8 Antibody [PAX8/1492] (A250361).

Disclaimer: This product is for research use only. It is not intended for diagnostic or therapeutic use.

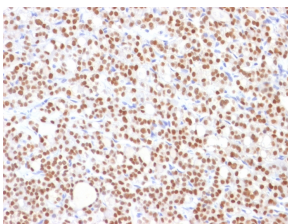
Images:



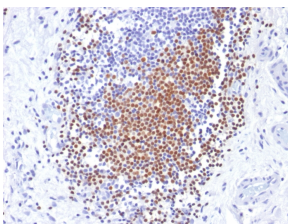
Western blot analysis of (A) recombinant PAX8 protein and (B) Raji cell lysate using Anti-PAX8 Antibody [PAX8/1492].



Immunohistochemical analysis of formalin-fixed, paraffin-embedded human renal cell carcinoma using Anti-PAX8 Antibody [PAX8/1492].



Immunohistochemical analysis of formalin-fixed, paraffin-embedded human thyroid carcinoma using Anti-PAX8 Antibody [PAX8/1492].



Immunohistochemical analysis of formalin-fixed, paraffin-embedded human urothelial carcinoma using Anti-PAX8 Antibody [PAX8/1492].