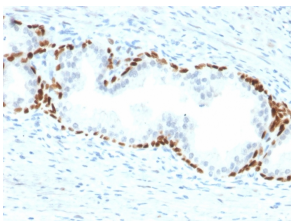


Anti-p63 Antibody [TP63/2428] - BSA and Azide free (A253611)

Specifications:

Name:	Anti-p63 Antibody [TP63/2428] - BSA and Azide free
Description:	Mouse monoclonal [TP63/2428] antibody to p63.
Applications:	Flow Cytometry, IHC-P
Recommended Dilutions:	Flow Cytometry: 1-2 µg/million cells, IHC-P: 1-2 µg/ml
Reactivity:	Human
Immunogen:	Recombinant full-length human p63 protein.
Host:	Mouse
Clonality:	Monoclonal
Clone ID:	TP63/2428
Isotype:	IgG2b
Light Chains:	kappa
Conjugate:	Unconjugated
Purification:	Protein A/G chromatography.
Concentration:	1 mg/ml
Product Form:	Liquid
Formulation:	Supplied in 10mM Phosphate Buffered Saline; without Sodium Azide and carrier free.
Storage:	Shipped at 4°C. Upon delivery aliquot and store at -20°C. Avoid freeze / thaw cycles.
General Notes:	This monoclonal antibody is also available in a different formulation with BSA and Sodium Azide - Anti-p63 Antibody [TP63/2428] (A250431).
Disclaimer:	This product is for research use only. It is not intended for diagnostic or therapeutic use.

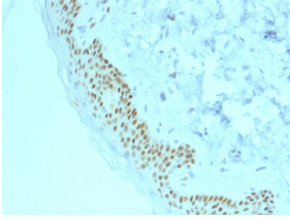
Images:



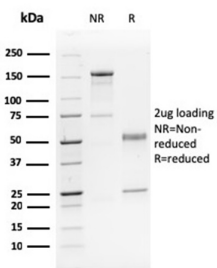
Immunohistochemical analysis of formalin-fixed, paraffin-embedded human prostate carcinoma using Anti-p63 Antibody [TP63/2428].

Anti-p63 Antibody [TP63/2428] - BSA and Azide free (A253611)

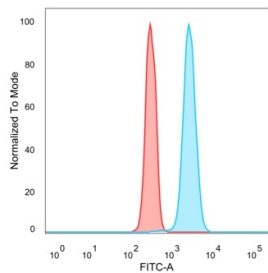
Images continued:



Immunohistochemical analysis of formalin-fixed, paraffin-embedded human basal cell carcinoma using Anti-p63 Antibody [TP63/2428].



SDS-PAGE analysis of Anti-p63 Antibody [TP63/2428] under non-reduced and reduced conditions; showing intact IgG and intact heavy and light chains, respectively. SDS-PAGE analysis confirms the integrity and purity of the antibody.



Flow cytometric analysis of PFA fixed HeLa cells using Anti-p63 Antibody [TP63/2428] followed by Goat Anti-Mouse IgG (CF® 488) (Blue). Isotype Control (Red).