

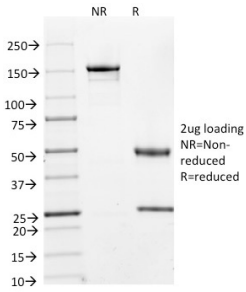
## Anti-Cyclin A2 Antibody [E67] - BSA and Azide free (A253632)

### Specifications:

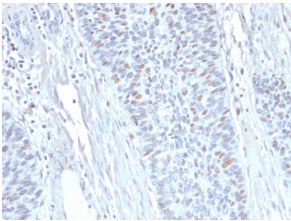
Name:	Anti-Cyclin A2 Antibody [E67] - BSA and Azide free
Description:	Mouse monoclonal [E67] antibody to Cyclin A2.
Applications:	Flow Cytometry, IF, IHC-P
Recommended Dilutions:	Flow Cytometry: 1-2 µg/million cells, IF: 1-2 µg/ml, IHC-P: 1-2 µg/ml
Reactivity:	Human, Mouse, Bovine, African Green Monkey, Mink
Immunogen:	full-length bovine Cyclin A protein.
Host:	Mouse
Clonality:	Monoclonal
Clone ID:	E67
Isotype:	IgG2a
Light Chains:	kappa
Conjugate:	Unconjugated
Purification:	Protein A/G chromatography.
Concentration:	1 mg/ml
Product Form:	Liquid
Formulation:	Supplied in 10mM Phosphate Buffered Saline; without Sodium Azide and carrier free.
Storage:	Shipped at 4°C. Upon delivery aliquot and store at -20°C. Avoid freeze / thaw cycles.
General Notes:	This monoclonal antibody is also available in a different formulation with BSA and Sodium Azide - Anti-Cyclin A2 Antibody [E67] (A250452).
Disclaimer:	This product is for research use only. It is not intended for diagnostic or therapeutic use.

## Anti-Cyclin A2 Antibody [E67] - BSA and Azide free (A253632)

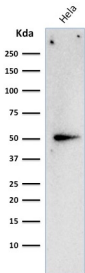
### Images:



SDS-PAGE analysis of Anti-Cyclin A2 Antibody [E67] under non-reduced and reduced conditions; showing intact IgG and intact heavy and light chains, respectively. SDS-PAGE analysis confirms the integrity and purity of the antibody.



Immunohistochemical analysis of formalin-fixed, paraffin-embedded human endometrium using Anti-Cyclin A2 Antibody [E67].



Western blot analysis of HeLa cell lysate using Anti-Cyclin A2 Antibody [E67].