

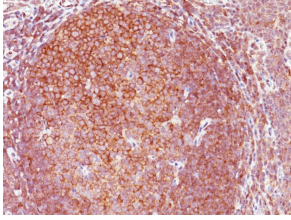
Anti-BCL10 Antibody [BL10/411] - BSA and Azide free (A253634)

Specifications:

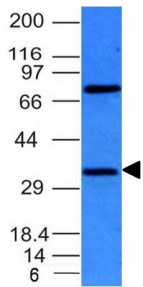
Name:	Anti-BCL10 Antibody [BL10/411] - BSA and Azide free
Description:	Mouse monoclonal [BL10/411] antibody to BCL10.
Applications:	Flow Cytometry, WB, IHC-P
Recommended Dilutions:	Flow Cytometry: 1-2 µg/million cells, WB: 1-2 µg/ml, IHC-P: 1-2 µg/ml
Reactivity:	Human
Immunogen:	Recombinant human BCL10 protein.
Epitope:	a.a. 122-168
Host:	Mouse
Clonality:	Monoclonal
Clone ID:	BL10/411
Isotype:	IgG1
Light Chains:	kappa
Conjugate:	Unconjugated
Purification:	Protein A/G chromatography.
Concentration:	1 mg/ml
Product Form:	Liquid
Formulation:	Supplied in 10mM Phosphate Buffered Saline; without Sodium Azide and carrier free.
Storage:	Shipped at 4°C. Upon delivery aliquot and store at -20°C. Avoid freeze / thaw cycles.
General Notes:	This monoclonal antibody is also available in a different formulation with BSA and Sodium Azide - Anti-BCL10 Antibody [BL10/411] (A250454).
Disclaimer:	This product is for research use only. It is not intended for diagnostic or therapeutic use.

Anti-BCL10 Antibody [BL10/411] - BSA and Azide free (A253634)

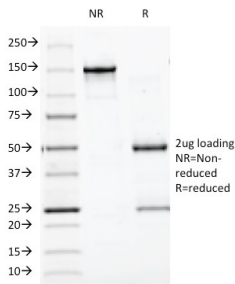
Images:



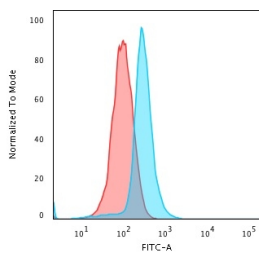
Immunohistochemical analysis of formalin-fixed, paraffin-embedded human tonsil using Anti-BCL10 Antibody [BL10/411].



Western blot analysis of HepG2 cell lysate using Anti-BCL10 Antibody [BL10/411].



SDS-PAGE analysis of Anti-BCL10 Antibody [BL10/411] under non-reduced and reduced conditions; showing intact IgG and intact heavy and light chains, respectively. SDS-PAGE analysis confirms the integrity and purity of the antibody.



Flow cytometric analysis of PFA fixed K562 cells using Anti-BCL10 Antibody [BL10/411] followed by Goat Anti-Mouse IgG (CF® 488) (Blue). Isotype Control (Red).