

Anti-CD3 epsilon Antibody [C3e/1931] - BSA and Azide free (A253674)

Specifications:

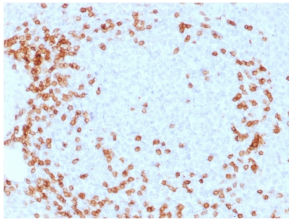
Name:	Anti-CD3 epsilon Antibody [C3e/1931] - BSA and Azide free
Description:	Mouse monoclonal [C3e/1931] antibody to CD3 epsilon.
Specificity:	This antibody recognizes the epsilon-chain of CD3, which consists of five different polypeptide chains (designated as gamma, delta, epsilon, zeta, and eta) with MW ranging from 16-28kDa. The CD3 complex is closely associated at the lymphocyte cell surface with the T cell antigen receptor (TCR). Reportedly, CD3 complex is involved in signal transduction to the T cell interior following antigen recognition. The CD3 antigen is first detectable in early thymocytes and probably represents one of the earliest signs of commitment to the T cell lineage. In cortical thymocytes, CD3 is predominantly intra-cytoplasmic. However, in medullary thymocytes, it appears on the T cell surface. CD3 antigen is a highly specific marker for T cells, and is present in majority of T cell neoplasms.
Applications:	ELISA, Flow Cytometry, WB, IHC-P
Recommended Dilutions:	Flow Cytometry: 1-2 µg/million cells, WB: 1-2 µg/ml, IHC-P: 1-2 µg/ml
Reactivity:	Human
Immunogen:	Recombinant fragment, within amino acids 23-119, of CD3e protein. The exact sequence is proprietary.
Host:	Mouse
Clonality:	Monoclonal
Clone ID:	C3e/1931
Isotype:	IgG1
Light Chains:	kappa
Conjugate:	Unconjugated
Purification:	Protein A/G chromatography.
Concentration:	1 mg/ml
Product Form:	Liquid
Formulation:	Supplied in 10mM Phosphate Buffered Saline; without Sodium Azide and carrier free.
Storage:	Shipped at 4°C. Upon delivery aliquot and store at -20°C. Avoid freeze / thaw cycles.
General Notes:	This monoclonal antibody is also available in a different formulation with BSA and Sodium Azide - Anti-CD3 epsilon Antibody [C3e/1931] (A250494).

Anti-CD3 epsilon Antibody [C3e/1931] - BSA and Azide free (A253674)

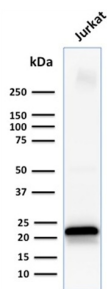
Specifications continued:

Disclaimer: This product is for research use only. It is not intended for diagnostic or therapeutic use.

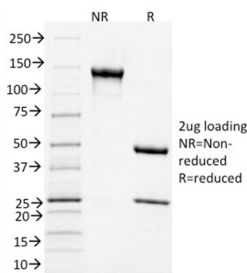
Images:



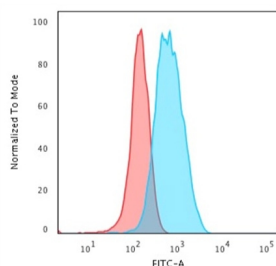
Immunohistochemical analysis of formalin-fixed, paraffin-embedded human spleen using Anti-CD3 epsilon Antibody [C3e/1931].



Western blot analysis of human Jurkat cell lysate using Anti-CD3 epsilon Antibody [C3e/1931].



SDS-PAGE analysis of Anti-CD3 epsilon Antibody [C3e/1931] under non-reduced and reduced conditions; showing intact IgG and intact heavy and light chains, respectively. SDS-PAGE analysis confirms the integrity and purity of the antibody.



Flow cytometric analysis of Jurkat cells using Anti-CD3 epsilon Antibody [C3e/1931] followed by Goat Anti-Mouse IgG (CF® 488) (Blue). Isotype Control (Red).