

Anti-CD20 Antibody [MS4A1/3411] - BSA and Azide free (A253771)

Specifications:

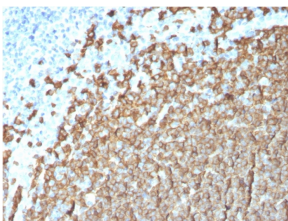
Name:	Anti-CD20 Antibody [MS4A1/3411] - BSA and Azide free
Description:	Mouse monoclonal [MS4A1/3411] antibody to CD20.
Specificity:	This antibody recognizes a protein of 30-33kDa, which is identified as CD20. It is a non-Ig differentiation antigen of B-cells and its expression is restricted to normal and neoplastic B-cells, being absent from all other leukocytes and tissues. CD20 is expressed by pre-B-cells and persists during all stages of B-cell maturation but is lost upon terminal differentiation into plasma cells. This MAb can be used for immunophenotyping of leukemia and malignant cells, B lymphocyte detection in peripheral blood and B cell localization in tissues. It reacts with the majority of B-cells present in peripheral blood and lymphoid tissues and their derived lymphomas. In lymphoid tissue, germinal center blasts and B-immunoblasts are particularly reactive. It is a reliable antibody for ascribing a B-cell phenotype in known lymphoid tissues. Rarely, CD20-positive T-cell lymphomas have been reported. Reactivity has also been noted with Reed-Sternberg cells in cases of Hodgkin's disease, particularly of lymphocyte predominant type.
Applications:	ELISA, WB, Flow Cytometry, IF, IHC-P
Recommended Dilutions:	WB: 1-2 µg/ml, Flow Cytometry: 1-2 µg/million cells, IF: 1-2 µg/ml, IHC-P: 1-2 µg/ml
Reactivity:	Human
Immunogen:	Recombinant fragment, within amino acids 213-297, of human MS4A1 protein. The exact sequence is proprietary.
Host:	Mouse
Clonality:	Monoclonal
Clone ID:	MS4A1/3411
Isotype:	IgG2b
Light Chains:	kappa
Conjugate:	Unconjugated
Purification:	Protein A/G chromatography.
Concentration:	1 mg/ml
Product Form:	Liquid
Formulation:	Supplied in 10mM Phosphate Buffered Saline; without Sodium Azide and carrier free.

Anti-CD20 Antibody [MS4A1/3411] - BSA and Azide free (A253771)

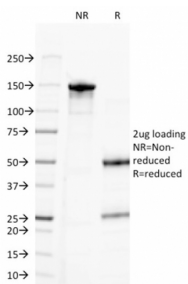
Specifications continued:

Storage:	Shipped at 4°C. Upon delivery aliquot and store at -20°C. Avoid freeze / thaw cycles.
General Notes:	This monoclonal antibody is also available in a different formulation with BSA and Sodium Azide - Anti-CD20 Antibody [MS4A1/3411] (A250591).
Disclaimer:	This product is for research use only. It is not intended for diagnostic or therapeutic use.

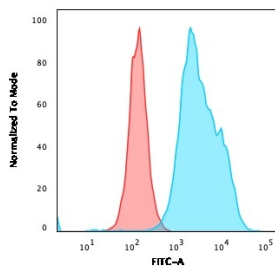
Images:



Immunohistochemical analysis of formalin-fixed, paraffin-embedded human tonsil using Anti-CD20 Antibody [MS4A1/3411].



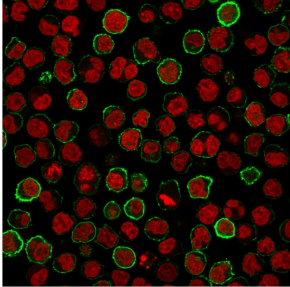
SDS-PAGE analysis of Anti-CD20 Antibody [MS4A1/3411] under non-reduced and reduced conditions; showing intact IgG and intact heavy and light chains, respectively. SDS-PAGE analysis confirms the integrity and purity of the antibody.



Flow cytometric analysis of Raji cells using Anti-CD20 Antibody [MS4A1/3411] followed by Goat Anti-Mouse IgG (CF® 488) (Blue). Isotype Control (Red).

Anti-CD20 Antibody [MS4A1/3411] - BSA and Azide free (A253771)

Images continued:



Immunofluorescent analysis of Raji cells stained with Anti-CD20 Antibody [MS4A1/3411] followed by Goat Anti-Mouse IgG (CF@ 488) (Green). Nuclei are stained with RedDot.