

## Anti-CD22 Antibody [BLCAM/1795] - BSA and Azide free (A253791)

### Specifications:

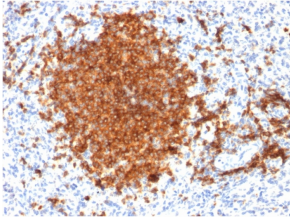
Name:	Anti-CD22 Antibody [BLCAM/1795] - BSA and Azide free
Description:	Mouse monoclonal [BLCAM/1795] antibody to CD22.
Specificity:	This antibody recognizes a protein of 130-140kDa, identified as CD22 (also known as BL-CAM). CD22 expression is restricted to normal and neoplastic B cells and is absent from other haemopoietic cell types. In B-cell ontogeny, CD22 is first expressed in the cytoplasm of pro-B and pre-B cells, and on the surface as B cells mature to become IgD <sup>+</sup> . It is not expressed by plasma cells, CD22 is found highly expressed in follicular mantle and marginal zone B-cells, and while germinal center B-cells are relatively weak. CD22 is a member of the immunoglobulin superfamily and serves as an adhesion receptor for sialic acid-bearing ligands expressed on erythrocytes and all leukocyte classes. It also associates with tyrosine kinases and play a role in signal transduction and B-cell activation.
Applications:	ELISA, Flow Cytometry, WB, IF, IHC-P
Recommended Dilutions:	Flow Cytometry: 1-2 µg/million cells, WB: 1-2 µg/ml, IF: 1-2 µg/ml, IHC-P: 1-2 µg/ml
Reactivity:	Human
Immunogen:	Recombinant fragment, around amino acids 52-178, of human CD22 protein. The exact sequence is proprietary.
Host:	Mouse
Clonality:	Monoclonal
Clone ID:	BLCAM/1795
Isotype:	IgG1
Light Chains:	kappa
Conjugate:	Unconjugated
Purification:	Protein A/G chromatography.
Concentration:	1 mg/ml
Product Form:	Liquid
Formulation:	Supplied in 10mM Phosphate Buffered Saline; without Sodium Azide and carrier free.
Storage:	Shipped at 4°C. Upon delivery aliquot and store at -20°C. Avoid freeze / thaw cycles.
General Notes:	This monoclonal antibody is also available in a different formulation with BSA and Sodium Azide - Anti-CD22 Antibody [BLCAM/1795] (A250611).

# Anti-CD22 Antibody [BLCAM/1795] - BSA and Azide free (A253791)

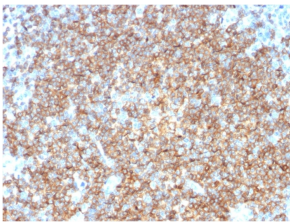
## Specifications continued:

**Disclaimer:** This product is for research use only. It is not intended for diagnostic or therapeutic use.

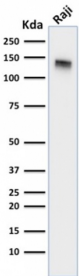
## Images:



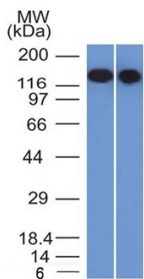
Immunohistochemical analysis of formalin-fixed, paraffin-embedded human spleen using Anti-CD22 Antibody [BLCAM/1795].



Immunohistochemical analysis of formalin-fixed, paraffin-embedded human tonsil using Anti-CD22 Antibody [BLCAM/1795].



Western blot analysis of Raji cell lysate using Anti-CD22 Antibody [BLCAM/1795].



Western blot analysis of Raji and Ramos cell lysates using Anti-CD22 Antibody [BLCAM/1795].