

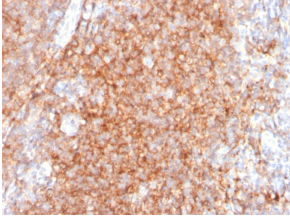
## Anti-CD40 Antibody [C40/2383] - BSA and Azide free (A253880)

### Specifications:

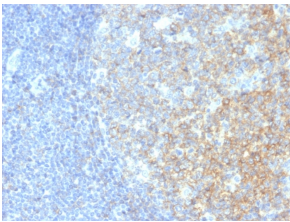
Name:	Anti-CD40 Antibody [C40/2383] - BSA and Azide free
Description:	Mouse monoclonal [C40/2383] antibody to CD40.
Applications:	ELISA, Flow Cytometry, IHC-P
Recommended Dilutions:	Flow Cytometry: 1-2 µg/million cells, IHC-P: 1-2 µg/ml
Reactivity:	Human
Immunogen:	Recombinant fragment, around amino acids 29-107, of human CD40 protein. The exact sequence is proprietary.
Host:	Mouse
Clonality:	Monoclonal
Clone ID:	C40/2383
Isotype:	IgG2b
Light Chains:	kappa
Conjugate:	Unconjugated
Purification:	Protein A/G chromatography.
Concentration:	1 mg/ml
Product Form:	Liquid
Formulation:	Supplied in 10mM Phosphate Buffered Saline; without Sodium Azide and carrier free.
Storage:	Shipped at 4°C. Upon delivery aliquot and store at -20°C. Avoid freeze / thaw cycles.
General Notes:	This monoclonal antibody is also available in a different formulation with BSA and Sodium Azide - Anti-CD40 Antibody [C40/2383] (A250700).
Disclaimer:	This product is for research use only. It is not intended for diagnostic or therapeutic use.

# Anti-CD40 Antibody [C40/2383] - BSA and Azide free (A253880)

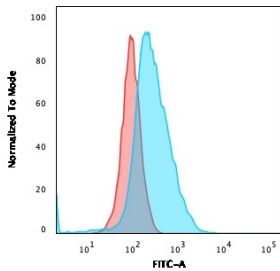
## Images:



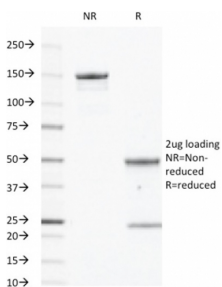
Immunohistochemical analysis of formalin-fixed, paraffin-embedded human tonsil using Anti-CD40 Antibody [C40/2383].



Immunohistochemical analysis of formalin-fixed, paraffin-embedded human tonsil using Anti-CD40 Antibody [C40/2383].



Flow cytometric analysis of U2OS cells using Anti-CD40 Antibody [C40/2383] followed by Goat Anti-Mouse IgG (CF® 488) (Blue). Isotype Control (Red).



SDS-PAGE analysis of Anti-CD40 Antibody [C40/2383] under non-reduced and reduced conditions; showing intact IgG and intact heavy and light chains, respectively. SDS-PAGE analysis confirms the integrity and purity of the antibody.