

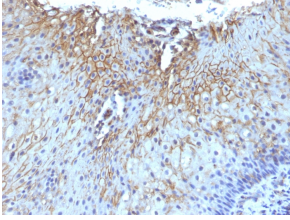
Anti-CD59 Antibody [SPM616] - BSA and Azide free (A253921)

Specifications:

Name:	Anti-CD59 Antibody [SPM616] - BSA and Azide free
Description:	Mouse monoclonal [SPM616] antibody to CD59.
Specificity:	This antibody is useful for studying GPI-anchored proteins, PNH, and CD59 functions.
Applications:	Functional Studies, Flow Cytometry, IF, IHC-P
Recommended Dilutions:	Flow Cytometry: 1-2 µg/million cells, IF: 1-2 µg/ml, IHC-P: 1-2 µg/ml
Reactivity:	Human
Immunogen:	Recombinant full-length human CD59 protein.
Host:	Mouse
Clonality:	Monoclonal
Clone ID:	SPM616
Isotype:	IgG1
Light Chains:	kappa
Conjugate:	Unconjugated
Concentration:	1 mg/ml
Product Form:	Liquid
Formulation:	Supplied in 10mM Phosphate Buffered Saline; without Sodium Azide and carrier free.
Storage:	Shipped at 4°C. Upon delivery aliquot and store at -20°C. Avoid freeze / thaw cycles.
General Notes:	This monoclonal antibody is also available in a different formulation with BSA and Sodium Azide - Anti-CD59 Antibody [SPM616] (A250741).
Disclaimer:	This product is for research use only. It is not intended for diagnostic or therapeutic use.

Anti-CD59 Antibody [SPM616] - BSA and Azide free (A253921)

Images:



Immunohistochemical analysis of formalin-fixed, paraffin-embedded human tongue using Anti-CD59 Antibody [SPM616].