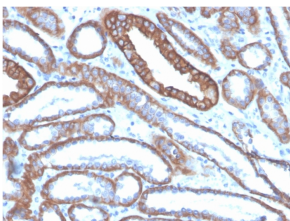


## Anti-E Cadherin Antibody [CDH1/4585] - BSA and Azide free (A254003)

### Specifications:

Name:	Anti-E Cadherin Antibody [CDH1/4585] - BSA and Azide free
Description:	Mouse monoclonal [CDH1/4585] antibody to E Cadherin.
Applications:	IHC-P
Recommended Dilutions:	IHC-P: 1-2 µg/ml
Reactivity:	Human, Mouse
Immunogen:	Purified His-tagged CDH1 protein.
Host:	Mouse
Clonality:	Monoclonal
Clone ID:	CDH1/4585
Isotype:	IgG1
Light Chains:	kappa
Conjugate:	Unconjugated
Purification:	Protein A/G chromatography.
Concentration:	1 mg/ml
Product Form:	Liquid
Formulation:	Supplied in 10mM Phosphate Buffered Saline; without Sodium Azide and carrier free.
Storage:	Shipped at 4°C. Upon delivery aliquot and store at -20°C. Avoid freeze / thaw cycles.
General Notes:	This monoclonal antibody is also available in a different formulation with BSA and Sodium Azide - Anti-E Cadherin Antibody [CDH1/4585] (A250823).
Disclaimer:	This product is for research use only. It is not intended for diagnostic or therapeutic use.

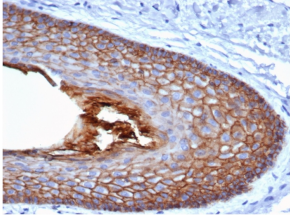
### Images:



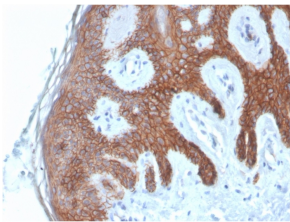
Immunohistochemical analysis of formalin-fixed, paraffin-embedded human kidney using Anti-E Cadherin Antibody [CDH1/4585].

## Anti-E Cadherin Antibody [CDH1/4585] - BSA and Azide free (A254003)

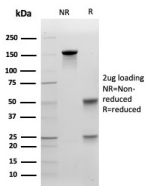
Images continued:



Immunohistochemical analysis of formalin-fixed, paraffin-embedded human skin using Anti-E Cadherin Antibody [CDH1/4585].



Immunohistochemical analysis of formalin-fixed, paraffin-embedded human skin using Anti-E Cadherin Antibody [CDH1/4585].



SDS-PAGE analysis of Anti-E Cadherin Antibody [CDH1/4585] under non-reduced and reduced conditions; showing intact IgG and intact heavy and light chains, respectively. SDS-PAGE analysis confirms the integrity and purity of the antibody.