

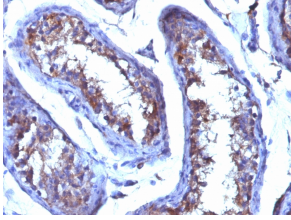
Anti-Testosterone Antibody [4E1G2] - BSA and Azide free (A254042)

Specifications:

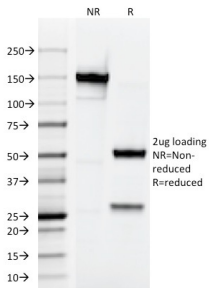
Name:	Anti-Testosterone Antibody [4E1G2] - BSA and Azide free
Description:	Mouse monoclonal [4E1G2] antibody to Testosterone.
Specificity:	This antibody is highly specific to testosterone. Its affinity constant for testosterone is $\sim 10^{10} \text{M}^{-1}$. In competitive binding immunoassay, it reacts with testosterone 100%, 11-beta-hydroxy testosterone 3.3%, 17-alpha-methyl testosterone
Applications:	ELISA, Radioimmunoassay, IHC-P
Recommended Dilutions:	IHC-P: 0.25-0.5 $\mu\text{g/ml}$
Immunogen:	Testosterone 3 CMO conjugated to BSA.
Host:	Mouse
Clonality:	Monoclonal
Clone ID:	4E1G2
Isotype:	IgG1
Light Chains:	kappa
Conjugate:	Unconjugated
Purification:	Protein A/G chromatography.
Concentration:	1 mg/ml
Product Form:	Liquid
Formulation:	Supplied in 10mM Phosphate Buffered Saline; without Sodium Azide and carrier free.
Storage:	Shipped at 4°C. Upon delivery aliquot and store at -20°C. Avoid freeze / thaw cycles.
General Notes:	This monoclonal antibody is also available in a different formulation with BSA and Sodium Azide - Anti-Testosterone Antibody [4E1G2] (A250862).
Disclaimer:	This product is for research use only. It is not intended for diagnostic or therapeutic use.

Anti-Testosterone Antibody [4E1G2] - BSA and Azide free (A254042)

Images:



Immunohistochemical analysis of formalin-fixed, paraffin-embedded human testicular carcinoma using Anti-Testosterone Antibody [4E1G2].



SDS-PAGE analysis of Anti-Testosterone Antibody [4E1G2] under non-reduced and reduced conditions; showing intact IgG and intact heavy and light chains, respectively. SDS-PAGE analysis confirms the integrity and purity of the antibody.