

## Anti-pan Cytokeratin Antibody [AE-1/AE-3] - BSA and Azide free (A254108)

### Specifications:

Name:	Anti-pan Cytokeratin Antibody [AE-1/AE-3] - BSA and Azide free
Description:	Mouse monoclonal [AE-1/AE-3] antibody to pan Cytokeratin.
Specificity:	Twenty human keratins are resolved with two-dimensional gel electrophoresis into acidic (pI 6.0) subfamilies. This antibody cocktail recognizes acidic (Type I or LMW) and basic (Type II or HMW) cytokeratins, which 67kDa (CK1); 64kDa (CK3); 59kDa (CK4); 58kDa (CK5); 56kDa (CK6); 52kDa (CK8); 56.5kDa (CK10); 50kDa (CK14); 50kDa (CK15); 48kDa (CK16); 40kDa (CK19). Many studies have shown the usefulness of keratins as markers in cancer research and tumor diagnosis. AE-1/AE-3 is a broad spectrum anti pan-cytokeratin antibody cocktail, which differentiates epithelial tumors from non-epithelial tumors e.g. squamous vs. adenocarcinoma of the lung, liver carcinoma, breast cancer, and esophageal cancer. It has been used to characterize the source of various neoplasms and to study the distribution of cytokeratin containing cells in epithelia during normal development and during the development of epithelial neoplasms. This antibody stains cytokeratins present in normal and abnormal human tissues and has shown high sensitivity in the recognition of epithelial cells and carcinomas.
Applications:	Flow Cytometry, IF, WB, IHC-P
Recommended Dilutions:	Flow Cytometry: 1-2 µg/million cells, IF: 1-2 µg/ml, WB: 1-2 µg/ml, IHC-P: 0.25-0.5 µg/ml
Reactivity:	Human, Monkey, Bovine, Canine, Rabbit, Mouse, Rat, Chicken
Immunogen:	Human epidermal keratin.
Host:	Mouse
Clonality:	Oligoclonal
Clone ID:	AE-1/AE-3
Isotype:	IgG1, kappa + IgG1, kappa
Conjugate:	Unconjugated
Purification:	Protein A/G chromatography.
Concentration:	1 mg/ml
Product Form:	Liquid
Formulation:	Supplied in 10mM Phosphate Buffered Saline; without Sodium Azide and carrier free.
Storage:	Shipped at 4°C. Upon delivery aliquot and store at -20°C. Avoid freeze / thaw cycles.

## Anti-pan Cytokeratin Antibody [AE-1/AE-3] - BSA and Azide free (A254108)

### Specifications continued:

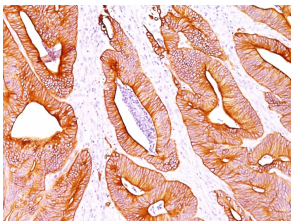
#### General Notes:

Please note, this product is an oligoclonal antibody; it is a cocktail of monoclonal antibodies that have been carefully selected. Oligoclonal antibodies not only have the specificity and batch-to-batch consistency of a monoclonal antibody, but they also have the advantage of the sensitivity of a polyclonal antibody due to their ability to recognize multiple epitopes on an antigen. This oligoclonal antibody is also available in a different formulation with BSA and Sodium Azide - Anti-pan Cytokeratin Antibody [AE-1/AE-3] (A250928).

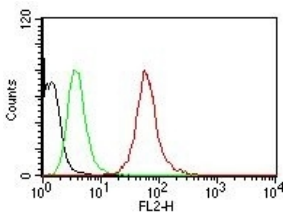
#### Disclaimer:

This product is for research use only. It is not intended for diagnostic or therapeutic use.

### Images:



Immunohistochemical analysis of formalin-fixed, paraffin-embedded human colon carcinoma using Anti-pan Cytokeratin Antibody [AE-1/AE-3].



Flow cytometric analysis of HeLa cells labeling pan Cytokeratins with Anti-pan Cytokeratin Antibody [AE-1/AE-3] (PE) (Red). Cells alone (Black). Isotype Control (Green).