

Anti-CD20 Antibody [L26 + IGEL/773] (A254287)

Specifications:

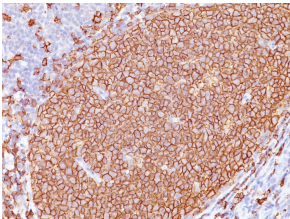
Name:	Anti-CD20 Antibody [L26 + IGEL/773]
Description:	Mouse monoclonal [L26 + IGEL/773] antibody to CD20.
Specificity:	This antibody recognizes a protein of 30-33kDa, which is identified as CD20. Its epitope is located in the cytoplasmic domain of CD20 and was, therefore, ascribed as CD20cy in the 5th Workshop. CD20 is a non-Ig differentiation antigen of B-cells and its expression is restricted to normal and neoplastic B-cells, being absent from all other leukocytes and tissues. CD20 is expressed by pre B-cells and persists during all stages of B-cell maturation but is lost upon terminal differentiation into plasma cells. This MAb can be used for immunophenotyping of leukemia and malignant cells, B lymphocyte detection in peripheral blood and B cell localization in tissues. It reacts with the majority of B-cells present in peripheral blood and lymphoid tissues and their derived lymphomas. In lymphoid tissue, germinal center blasts and B-immunoblasts are particularly reactive. It is a reliable antibody for ascribing a B-cell phenotype in known lymphoid tissues. Rarely, CD20-positive T-cell lymphomas have been reported. Reactivity has also been noted with Reed-Sternberg cells in cases of Hodgkin s disease, particularly of lymphocyte predominant type.
Applications:	Flow Cytometry, IF, IHC-P
Recommended Dilutions:	Flow Cytometry: 5-10 μ l / million cells, IF: 1:50-1:100, IHC-P: 1:100-1:200
Reactivity:	Human, Baboon, Monkey
Cross Reactivity:	This antibody does not cross react with Bovine, Canine, Porcine, or Rat.
Immunogen:	Clone L26: Human tonsil B cells. Clone IGEL/773: Recombinant human MS4A1 protein.
Host:	Mouse
Clonality:	Oligoclonal
Clone ID:	L26 + IGEL/773
Isotype:	IgG2a, kappa + IgG2a, kappa
Conjugate:	Unconjugated
Purity:	Tissue culture supernatant.
Product Form:	Liquid
Formulation:	Supplied as an aliquot of tissue culture supernatant with 0.05% Sodium Azide.

Anti-CD20 Antibody [L26 + IGEL/773] (A254287)

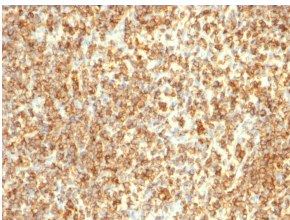
Specifications continued:

Storage:	Shipped at 4°C. Upon delivery aliquot and store at -20°C. Avoid freeze / thaw cycles.
General Notes:	Please note, this product is an oligoclonal antibody; it is a cocktail of monoclonal antibodies that have been carefully selected. Oligoclonal antibodies not only have the specificity and batch-to-batch consistency of a monoclonal antibody, but they also have the advantage of the sensitivity of a polyclonal antibody due to their ability to recognize multiple epitopes on an antigen.
Disclaimer:	This product is for research use only. It is not intended for diagnostic or therapeutic use.

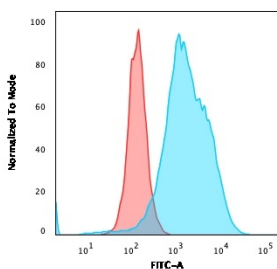
Images:



Immunohistochemical analysis of formalin-fixed, paraffin-embedded human tonsil using Anti-CD20 Antibody [L26 + IGEL/773].



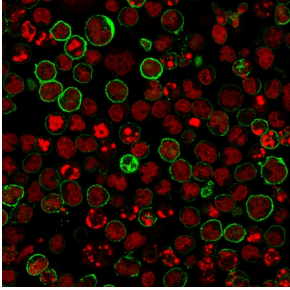
Immunohistochemical analysis of formalin-fixed, paraffin-embedded human lymphoma using Anti-CD20 Antibody [L26 + IGEL/773].



Flow cytometric analysis of Raji cells using Anti-CD20 Antibody [L26 + IGEL/773] followed by Goat Anti-Mouse IgG (CF® 488) (Blue). Isotype Control (Red).

Anti-CD20 Antibody [L26 + IGEL/773] (A254287)

Images continued:



Immunofluorescent analysis of Raji cells stained with Anti-CD20 Antibody [L26 + IGEL/773] followed by Goat Anti-Mouse IgG (CF@ 488) (Green). Nuclei are stained with RedDot.