

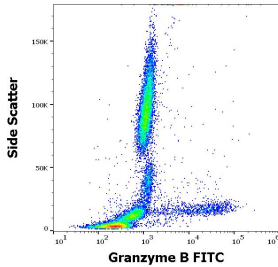
## Anti-Granzyme B Antibody [CLB-GB11] (FITC) (A254409)

### Specifications:

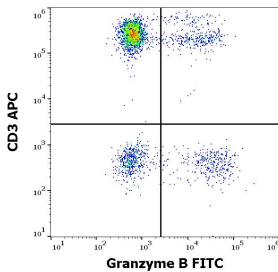
Name:	Anti-Granzyme B Antibody [CLB-GB11] (FITC)
Description:	Mouse monoclonal [CLB-GB11] antibody to Granzyme B (FITC).
Specificity:	The mouse monoclonal antibody CLB-GB11 recognizes granzyme B, a 31 kDa serine protease expressed intracellularly in activated Tc cells and NK cells.
Applications:	FC
Recommended Dilutions:	Flow Cytometry: This reagent is designed for analysis of human blood cells using 4 µl reagent / 100 µl of whole blood or 10 <sup>6</sup> cells in a suspension.
Reactivity:	Non-human primates, Human
Immunogen:	Human NK cell line YT-INDY-derived granzyme B.
Host:	Mouse
Clonality:	Monoclonal
Clone ID:	CLB-GB11
Isotype:	IgG1
Conjugate:	FITC
Purification:	The purified antibody is conjugated with fluorescein isothiocyanate (FITC) under optimum conditions. The conjugate is purified by size-exclusion chromatography.
Product Form:	Liquid
Formulation:	Supplied in Phosphate Buffered Saline with 15 mM Sodium Azide and 0.2% BSA.
Storage:	Store in the dark at 2-8°C. Avoid prolonged exposure to light. Do not freeze!
Disclaimer:	This product is for research use only. It is not intended for diagnostic or therapeutic use.

## Anti-Granzyme B Antibody [CLB-GB11] (FITC) (A254409)

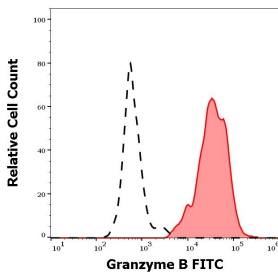
### Images:



Flow cytometry intracellular staining pattern of human peripheral whole blood stained using Anti-Granzyme B Antibody [CLB-GB11] (FITC) (A254409) (4  $\mu$ l reagent / 100  $\mu$ l of peripheral whole blood).



Flow cytometry multicolor intracellular staining of human lymphocytes stained using Anti-Granzyme B Antibody [CLB-GB11] (FITC) (A254409) (4  $\mu$ l reagent / 100  $\mu$ l of peripheral whole blood) and Anti-CD3 Antibody [UCHT1] (APC) (A86518) (10  $\mu$ l reagent / 100  $\mu$ l of peripheral whole blood).



Separation of human CD3 negative Granzyme B positive lymphocytes (red-filled) from CD3 negative Granzyme B negative lymphocytes (black-dashed) in flow cytometry analysis (intracellular staining) of human peripheral whole blood stained using Anti-Granzyme B Antibody [CLB-GB11] (FITC) (A254409) (4  $\mu$ l reagent / 100  $\mu$ l of peripheral whole blood).