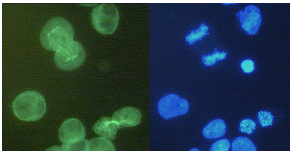


Anti-alpha Tubulin Antibody [YOL1/34] (A254436)

Specifications:

Name:	Anti-alpha Tubulin Antibody [YOL1/34]
Description:	Rat monoclonal [YOL1/34] antibody to alpha Tubulin.
Specificity:	This antibody recognizes an epitope of alpha-tubulin localized between amino acids 414-422. It has higher affinity for fixed microtubules than for native ones.
Applications:	WB, IHC-P, ICC, Flow Cytometry, ELISA, IHC-Fr
Recommended Dilutions:	ICC: 4-8 µg/ml, WB: 1 µg/ml
Reactivity:	Human, Mouse, Rat, Mammalian, S. cerevisiae, Chicken
Immunogen:	Yeast tubulin.
Host:	Rat
Clonality:	Monoclonal
Clone ID:	YOL1/34
Isotype:	IgG2a
Conjugate:	Unconjugated
Purification:	Protein A chromatography.
Concentration:	1 mg/ml
Product Form:	Liquid
Formulation:	Supplied in Phosphate Buffered Saline with 15 mM Sodium Azide.
Storage:	Store at 2-8°C. Do not freeze!
Disclaimer:	This product is for research use only. It is not intended for diagnostic or therapeutic use.

Images:



Immunocytochemistry staining of alpha Tubulin in K562 cells using Anti-alpha Tubulin Antibody [YOL1/34] (concentration in sample 6 µg/ml, DAR-FITC, left picture) vs Hoechst 34580 nuclear staining (right picture).