

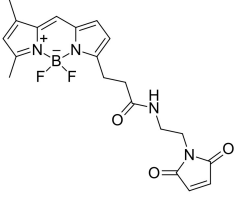
BDP FL maleimide (A270095)

Specifications:

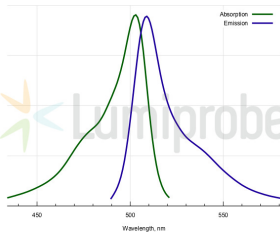
Name:	BDP FL maleimide
Description:	Thiol reactive BDP FL maleimide is a reactive dye for protein labeling, which has identical structure with BODIPY® FL maleimide. BDP FL is a borondipyromethene dye which has absorption and fluorescence spectra similar to fluorescein (FAM). However, this dye exhibits very high photostability. It is non-charged, and has low molecular weight. Its brightness is similar to fluorescein, R110 and xanthene dye derivatives like Alexa Fluor® 488. This fluorophore is ideal for fluorescent microscopy and many other applications. The fluorophore can substitute fluorescein for almost any application, and it is compatible with any FAM-capable fluorescent instrumentation.
Absorption Maxima:	503 nm
Extinction Coefficient:	92000 M ⁻¹ cm ⁻¹
Emission Maxima:	509 nm
Fluorescence Quantum Yield:	0.97
CAS Number:	773859-49-7
CF ₂₆₀ :	0.015
CF ₂₈₀ :	0.027
Mass Spec M+ Shift after Conjugation:	414.1
Purity:	95% (by 1H NMR and HPLC-MS).
Molecular Formula:	C ₂₀ H ₂₁ BF ₂ N ₄ O ₃
Molecular Weight:	414.21 kDa
Product Form:	Orange solid.
Solubility:	Good in organic solvents (DMF, DMSO). Limited in water.
Storage:	Shipped at room temperature. Upon delivery, store in the dark at -20°C. Avoid prolonged exposure to light. Desiccate.
Disclaimer:	This product is for research use only. It is not intended for diagnostic or therapeutic use.

BDP FL maleimide (A270095)

Images:



Structure of BODIPY FL maleimide.



Absorption and emission spectra of BDP FL.