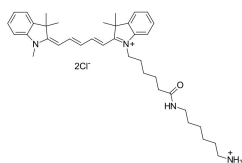


Cyanine 5 amine (A270161)

Specifications:

Name:	Cyanine 5 amine
Description:	Cyanine 5 amine is a reactive dye which contains amino group, an analog of Cy5® amine. This reagent can be coupled with a variety of activated esters and other electrophilic reagents. For example, this amine can be coupled with EDC-activated carboxylic groups. This bright and photostable dye is suitable for many different methods of fluorescence detection. Colorful fluorophore can also be easily detected in small quantities (nanomols) by naked human eye.
Absorption Maxima:	646 nm
Extinction Coefficient:	250000 M ⁻¹ cm ⁻¹
Emission Maxima:	662 nm
Fluorescence Quantum Yield:	0.2
CAS Number:	1807529-70-9
CF ₂₆₀ :	0.03
CF ₂₈₀ :	0.04
Purity:	95% (by 1H NMR and HPLC-MS).
Molecular Formula:	C ₃₈ H ₅₄ Cl ₂ N ₄ O
Molecular Weight:	653.77 kDa
Product Form:	Dark blue powder.
Solubility:	Moderate solubility in water and good in polar organic solvents (DMF, DMSO, alcohols).
Storage:	Shipped at room temperature. Upon delivery, store in the dark at -20°C. Avoid prolonged exposure to light.
Disclaimer:	This product is for research use only. It is not intended for diagnostic or therapeutic use.

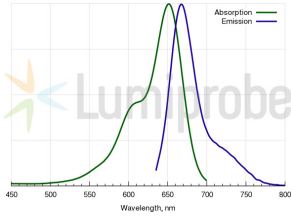
Images:



Cyanine 5 amine structure.

Cyanine 5 amine (A270161)

Images continued:



Cyanine 5 amine absorbance and emission spectra.