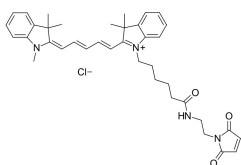


Cyanine 5 maleimide (A270168)

Specifications:

Name:	Cyanine 5 maleimide
Description:	Cyanine 5 maleimide is a mono-reactive dye which selectively couples with thiol groups (for example, with cysteines in peptides and proteins) to give labeled conjugates. Cyanine 5 is an analog of Cy5®, a common fluorophore which is compatible with various instrumentation like microscopes, imagers, and fluorescence readers. For the labeling of antibodies and sensitive proteins we recommend to use the water soluble sulfo-Cyanine 5 maleimide.
Absorption Maxima:	646 nm
Extinction Coefficient:	250000 M ⁻¹ cm ⁻¹
Emission Maxima:	662 nm
Fluorescence Quantum Yield:	0.2
CAS Number:	1437872-46-2, 1437796-65-0
CF ₂₆₀ :	0.03
CF ₂₈₀ :	0.04
Purity:	95% (by ¹ H NMR and HPLC-MS).
Molecular Formula:	C ₃₈ H ₄₅ CIN ₄ O ₃
Molecular Weight:	641.24 kDa
Product Form:	Dark blue powder.
Solubility:	Soluble in organic solvents (DMF, DMSO, dichloromethane). Practically insoluble in water (31 uM, 23 mg/L).
Storage:	Shipped at room temperature. Upon delivery, store in the dark at -20°C. Avoid prolonged exposure to light. Desiccate.
Disclaimer:	This product is for research use only. It is not intended for diagnostic or therapeutic use.

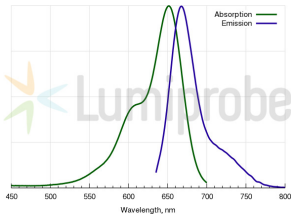
Images:



Cyanine 5 maleimide structure.

Cyanine 5 maleimide (A270168)

Images continued:



Cyanine 5 excitation and emission spectra.