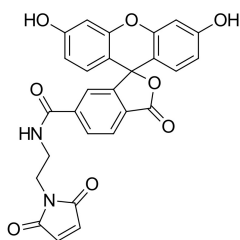


FAM maleimide, 6-isomer (A270216)

Specifications:

Name:	FAM maleimide, 6-isomer
Description:	FAM (fluorescein) is a bright fluorophore which is compatible with various fluorescence detection instruments. FAM is a universal dye that is useful for microscopy, qPCR and many other methods as well as for FRET-based and fluorescence polarization based binding assays. FAM maleimide is a thiol reactive dye for the labeling of proteins, peptides, and other thiolated molecules.
Absorption Maxima:	494 nm
Extinction Coefficient:	75000 M ⁻¹ cm ⁻¹
Emission Maxima:	520 nm
Fluorescence Quantum Yield:	0.9
CF ₂₆₀ :	0.20
CF ₂₈₀ :	0.17
Mass Spec M ⁺ Shift after Conjugation:	498.4
Purity:	95% (by ¹ H NMR and HPLC-MS).
Molecular Formula:	C ₂₇ H ₁₈ N ₂ O ₈
Molecular Weight:	498.44 kDa
Product Form:	Yellow solid.
Solubility:	Good in DMSO and DMF.
Storage:	Shipped at room temperature. Upon delivery, store in the dark at -20°C. Avoid prolonged exposure to light. Desiccate.
Disclaimer:	This product is for research use only. It is not intended for diagnostic or therapeutic use.

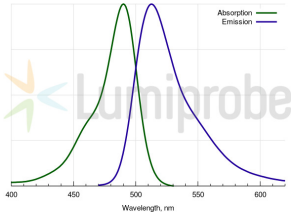
Images:



FAM maleimide, 6-isomer structure.

FAM maleimide, 6-isomer (A270216)

Images continued:



Fluorescein (FAM) absorbance and emission spectra.