

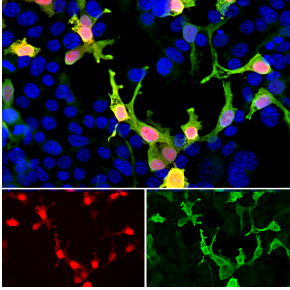
## Anti-mCherry Antibody (A270547)

### Specifications:

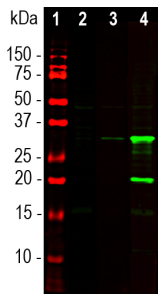
Name:	Anti-mCherry Antibody
Description:	Goat polyclonal antibody to mCherry.
Applications:	WB, ICC/IF, IHC
Recommended Dilutions:	WB: 1:1,000, ICC/IF: 1:500, IHC: 1:500
Cross Reactivity:	This antibody does not recognize GFP.
Immunogen:	Recombinant full-length mCherry, expressed in and purified from E. coli.
Sequence:	MVSKGEEDNMAIIKEFMRFKVMHEGVSNGHEFEIEGEGEGRPYEGTQTAKLKVTKGGP LPFAWDILSPQFMYGSKAYVKHPADIPDYLKLSFPEGFKWERVMNFEDGGVVTVTQDS SLQDGEFIYKVKLRGTNFPDGPVMQKKTMGWEASSERMYPEDGALKGEIKQRLKLD GGHYDAEVKTTYKAKKPVQLPGAYNvNIKLDITSHNEDYTIVEQYERAEGRHSTGGMD ELYK
Host:	Goat
Clonality:	Polyclonal
Isotype:	IgG
Conjugate:	Unconjugated
Purification:	Immunogen affinity purification.
Concentration:	1 mg/ml
Molecular Weight:	28 kDa
Product Form:	Liquid
Formulation:	Supplied in Phosphate Buffered Saline with 50% Glycerol and 5mM Sodium Azide.
Storage:	Shipped at 4°C. Upon delivery aliquot and store at -20°C. Avoid freeze / thaw cycles.
General Notes:	This antibody can be used to verify the size of fusion constructs by western blotting, and to amplify the endogenous fluorescence of mCherry in transfected cells.
Disclaimer:	This product is for research use only. It is not intended for diagnostic or therapeutic use.

## Anti-mCherry Antibody (A270547)

### Images:



Immunofluorescent analysis of HEK293 cells transfected with mCherry-HA construct (red) and stained using Anti-mCherry Antibody (A270547), at a dilution of 1:2,000, in green. Nuclear DNA is visualised in blue using Hoechst staining. The Anti-mCherry Antibody reveals mCherry protein is expressed only in transfected cells which appear golden in color. Untransfected cells expressing no mCherry are not recognized by the antibody, so as a result only their nuclei are visible.



Western blot analysis of HEK293 cell lysates using Anti-mCherry Antibody (A270547), at a dilution of 1:2,000, in green. The lanes contain samples of: [1] Protein standards, in red, [2] HEK293 control cells, [3] HEK293 cells stably transduced with a lentiviral vector expressing mCherry-HA construct, and [4] HEK293 cells transfected with mCherry-HA construct. The major band at about 30 kDa corresponds to mCherry protein.