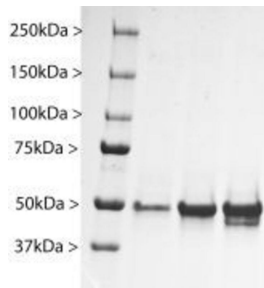


## Native Bovine GFAP Protein (A270562)

### Specifications:

Name:	Native Bovine GFAP Protein
Applications:	SDS-PAGE, ELISA
Source:	Bovine spinal cord.
Nature:	Native
Protein Species:	Bovine
Protein Length:	Full length protein.
Molecular Weight:	55 kDa
Product Form:	Liquid
Concentration:	1 mg/ml
Formulation:	Supplied in 6 M Urea.
Disclaimer:	This product is for research use only. It is not intended for diagnostic or therapeutic use.

### Images:



Western blot analysis of Purified Bovine GFAP protein, with three lanes of increasing load size.