

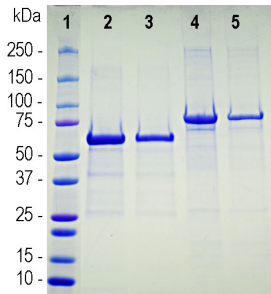
Recombinant Human ACE2 Protein (A270565)

Specifications:

Name:	Recombinant Human ACE2 Protein
Applications:	SDS-PAGE, ELISA, Immunogen Grade
Expression System:	Escherichia coli
Nature:	Recombinant
Protein Species:	Human
Protein Length:	Protein fragment.
Sequence:	MHHHHHSSGLVPRGSGMKETAALKFERQHMDSPDLGTDDDDKAMADIGSEFMSSSSW LLLSLVAVTAAQSTIEEQAKTFLDKFNHEAEDLFYQSSLASWNYNTNITEENVQNMNN AGDKWSAFLKEQSTLAQMYPLQEIQNLTVKLQLQALQQNGSSVLSKSKRLNTILNT MSTIYSTGKVCNPDNPQECLLLEPGLNEIMANSLDYNERLWAWESWRSEVKGKLRPLY EEYVVLKNEMARANHYEDYGDYWRGDYEVNGVDGYDYSRGLIEDVEHTFEEIKPLYE HLHAYVRAKLMNAYPSYISPIGCLPAHLLGDMWGRFWTNLYSLTVPFQKPNIDVTDA MVDQAWDAQRIFKEAEKFFVSVGLPNMTQGFWENSMLTDPGNVQKAVCHPTAWDLGKG DFRILMCTKVTMDDFLTAHHEMGHIQYDMAYAAQPFLLRNGANEGFHEAVGEIMSLSA ATPKHLKSIGLLSPDFQEDNETEINFLKQALTIVGTLPTFTYMLEKWRWMMVFKGEIPK DQWMKKWEMKREIVGVVEPVPHDETYCDP
Amino Acids:	1-500 aa.
Tag:	His Tag (N-terminus)
Molecular Weight:	70 kDa (by SDS-PAGE)
Predicted MW:	63 kDa
Product Form:	Liquid
Concentration:	1 mg/ml
Formulation:	Supplied in 10 mM Phosphate Buffer, pH 7.5, with 6 M Urea.
Storage:	Shipped at 4°C. Upon delivery aliquot and store at -20°C. Avoid freeze / thaw cycles.
Disclaimer:	This product is for research use only. It is not intended for diagnostic or therapeutic use.

Recombinant Human ACE2 Protein (A270565)

Images:



SDS-PAGE gel of Recombinant Human ACE2 Protein (A270565). The lanes contain samples of: [1] Protein standards, [2] 5.6 µg of BSA, [3] 2.8 µg of BSA, [4] and [5] Recombinant Human ACE2 Protein (A270565). The band on the SDS-PAGE with an apparent molecular weight of 70 kDa corresponds to the Recombinant Human ACE2 Protein (A270565), somewhat higher than the 63 kDa predicted from the amino acid sequence. The discrepancy is likely due to the highly acidic nature of the protein.